



University
of Regina



UNIVERSITY OF
SASKATCHEWAN



ST. THOMAS MORE COLLEGE
UNIVERSITY OF SASKATCHEWAN

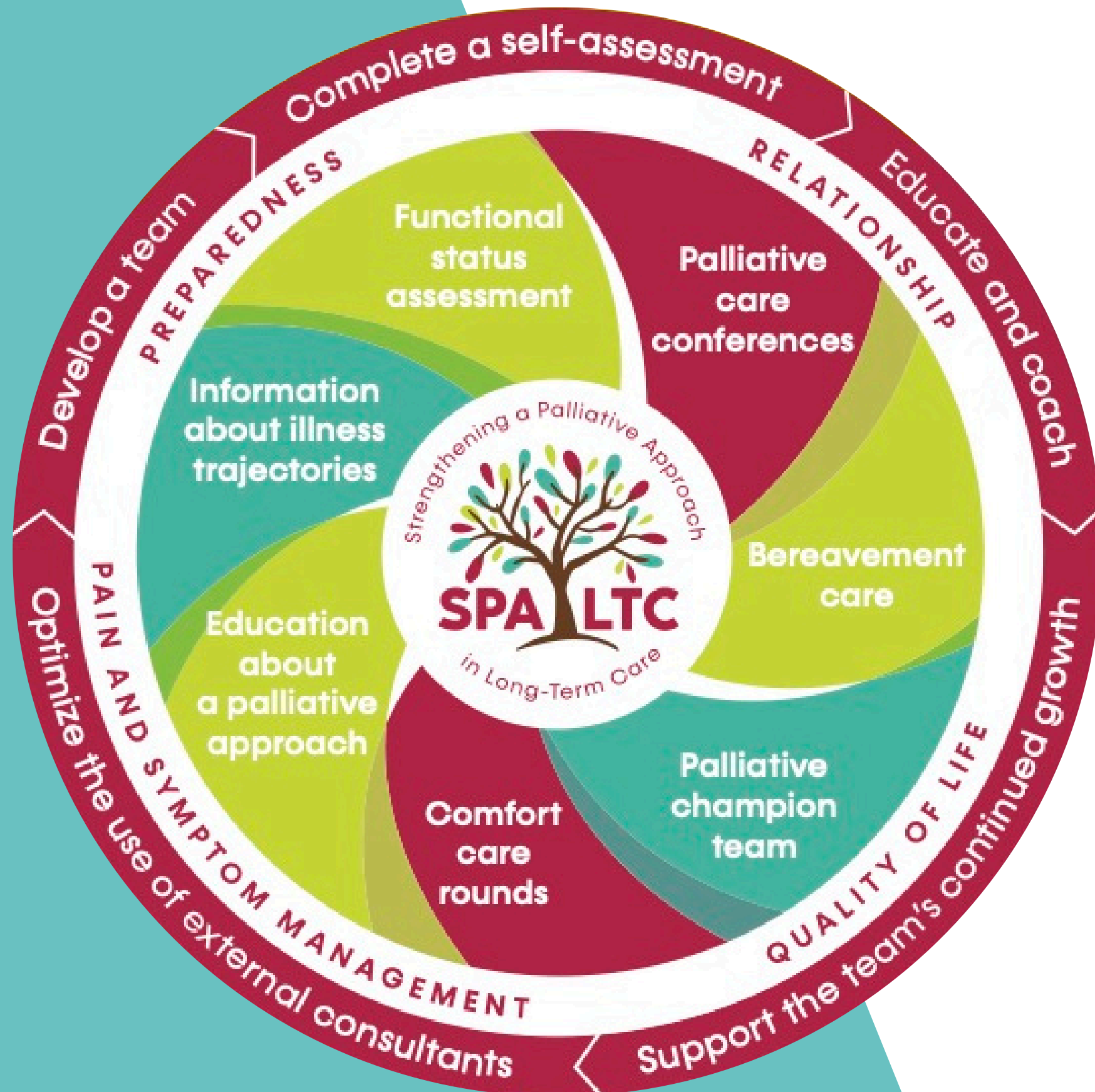
SPA-LTC

Strengthening a
Palliative Approach to
Long-Term Care

Kelsey Haczekwicz, MSc.
Katherine M. Ottley, MA
Keesha Kavia, BA
Wisdom Atulaegwu
Dr. Abigail Wickson-Griffiths, PhD,
RN
Dr. Paulette Hunter, PhD, R.D.
Psych



What did we do?



- SPA-LTC model was implemented in 9 long-term care homes
- See model for SPA-LTC Components
- Interviews were conducted with staff pre- and post- implementation
- Data analysed using the Ecological Framework (Durlak & DuPre, 2008)

Why does it matter?

Needs identified by staff

- Improve understanding of palliative care among staff, residents, and families
- Revive and formalize palliative care practices
- Promote earlier conversations with residents and families
- Create space for staff support and shared grief

“I think this team will really revive our palliative approach. I’m excited to be a part of it.”

Anticipated benefits

- Staff comfort and confidence in providing palliative care
- Support for family decision-making
- Tools and resources to support communication
- Champion teams to foster leadership and support

“I think it’s helpful if everybody gets the fundamentals of palliative care.”

“Verbally, it can sound like a personal opinion, but if there’s something printed from a valid place, everybody believes they are saying the right thing.”

What did we learn?

Leadership and Champions

- Leadership is key to success
- Champions in non-leadership roles helped drive progress
- Leaders who stay connected at ground level were the most effective

“I think every home in the world needs a champion team to get this conversation started earlier with families.”

Adaptation

- Sites adapted the model to fit existing structures and constraints
- Staff viewed SPA-LTC as a framework to personalize to their home and needs
- Flexible delivery was crucial

“Try to personalize it as much as possible, it’s just a framework.”

What should we do next?

Use the SPA-LTC model as a framework

- Integrate palliative approaches using SPA-LTC as a guiding structure
- Adapt the model to each home's individual context and needs

Engage champions and leaders

- Identify palliative care champions at all levels and disciplines
- Provide leadership support to ensure coordination and sustainability

Resources to support critical needs

- Visit www.spaltc.ca to access implementation tools, education materials, and additional resources



SPA-LTC
Strengthening a Palliative Approach
in Long-Term Care



**CIHR
IRSC** | Canadian Institutes of
Health Research
Instituts de recherche
en santé du Canada

Thank You

Connect with us!

Southern SK Contact:

- Dr. Abby Wickson-Griffiths, PhD, RN
- University of Regina
- abigail.wickson-griffiths@uregina.ca

Central-North SK Contact:

- Dr. Paulette Hunter, PhD, R.D. Psych
- St. Thomas More College, University of Saskatchewan
- spaltec@stmcollege.ca