



RaDAR November 2016 Newsletter

Sun Country Health Region update

RaDAR and the Kipling PHC team continue to collaborate to develop, adapt, and evaluate best practices in rural dementia care (team-based care, decision support tools, and specialist-to-provider support).



Kipling PHC Team
(some team members are not pictured)

A new template that integrates 3 separate visit flow sheets has been developed for Med Access EMR. The template is based on **PC-DATA (Primary Care Dementia Assessment and Treatment Algorithm)**, and has been adapted by the Kipling PHC team and RaDAR to reflect a team-based approach. For instance, the Kipling FP/NP, HC, and OT will each perform separate initial evaluations, to be followed by a team case conference with the patient/family to discuss the diagnosis and care plan. Ongoing monitoring is then guided by the FP/NP.

Dr. Andrew Kirk has also delivered two telehealth educational sessions to the Kipling team on the topics of differential diagnosis, and capacity and competency. Future educational sessions will be planned with the Kipling team.

Annual RaDAR Summit recap

On October 25-26, RaDAR and CCNA Team 20 Rural lead Dr. Debra Morgan hosted the 9th Annual Summit of the Knowledge Network in Rural and Remote Dementia Care in Saskatoon. Nearly 100 people took part, the largest Summit gathering to date.



Dr. Mark Rapoport

Following the Tuesday evening poster session, Dr. Debra Morgan opened the Summit program with an overview of past RaDAR achievements and present initiatives. We were pleased to welcome **Dr. Mark Rapoport**, Professor of Psychiatry at the University of Toronto and co-lead of **CCNA Team 16**, to deliver the keynote address on *Driving Cessation in Dementia*.



Jean Daku and Deb Kennett-Russill

Jean Daku and Deb Kennett-Russill, Sun Country Health Region, described the challenges and successes in their *Journey to Improvement in Dementia Care* as collaborators in a RaDAR project to introduce guideline-based best practices to the Sun Country Health Region (see left sidebar).



Dr. Andrew Kirk

The *On the RaDAR* panel is always a popular Summit feature that highlights new dementia initiatives in the province. This year, initiatives included Namaste Care (**Paulette Hunter**), the South Sask Dementia Assessment Unit (**Debbie Sinnett**), and an evaluation of First Link outreach (**Leslie Malloy-Weir**).



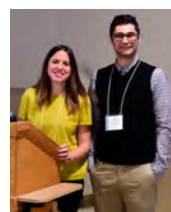
On the RaDAR panel

Summit is RaDAR's premier knowledge exchange event. This year, attendees from across the care spectrum took part in a small group exercise to have a meaningful dialogue about findings from an ongoing RaDAR-HQC study. HQC researchers **Beliz Osman Acan** and **Meric Acan** were on hand to present and discuss the study of health service use among individuals with dementia.

The **Alzheimer Society of Saskatchewan** shared presentation about their valuable programs and services, including



Jim Walls, Trina Hodgson, Laura Steeves-Green, Joanne Bracken



Beliz Osman Acan and Meric Acan (HQC)



Small Group discussing health services use study

the Young Onset Support Group. **Dr. Andrew Kirk** closed the day with an insightful review of *Cognition (Condensed)*.

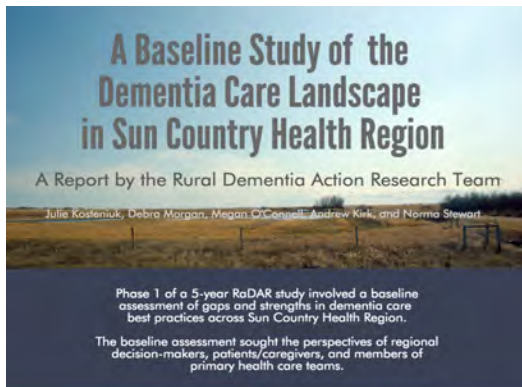
Dr. Debra Morgan, Chair of Rural Health Delivery (U of S), leads the RaDAR team. The team is focused on improving care for individuals with dementia and their families in rural and remote areas.



Dr. Debra Morgan

Debra has been inducted into the Canadian Academy of Health Sciences (September 2016) in recognition of a career devoted to innovative health service delivery and improving rural and remote dementia care.

Dementia Care in Sun Country Health Region report now available



METHODS

Data collection took place February to September, 2015. Thirty-two (N = 32) one-on-one telephone interviews were conducted.

Participants

- 19 of 31 health care providers from 8 PHC teams (61% response rate)
- 9 of 11 eligible Steering Group members and PHC Facilitators (82% response rate)
- 4 patients/caregivers were recruited by purposive sampling and clinic poster (response rate not available)

Three separate questionnaires were developed for the present study, informed by the current literature and a previous environmental scan of dementia-related services across Saskatchewan.

Ethics approval was received from the Behavioural Research Ethics Board of the University of Saskatchewan (BEH #14-435; pilot study BEH #14-474).

The full report is available [here](#).

Alzheimer Society of Saskatchewan Resource Centres

Dementia Helpline: 1-877-949-4141
<http://www.alzheimer.ca/en/sk>

Weyburn (Sun Country)
Karrie McFadden
suncountry@alzheimer.sk.ca
306-842-2273

Battleford (Prairie North)
Jim Walls
prairienorth@alzheimer.sk.ca
306-445-2206

Swift Current (Cypress)
Laura Hirtle
cypress@alzheimer.sk.ca
306-773-2683

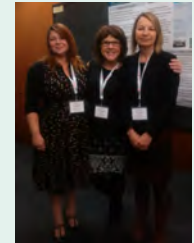
Prince Albert (PA Parkland)
Hannah Buckie
paparkland@alzheimer.sk.ca
1-306-922-2296

Saskatoon
saskatoon@alzheimer.sk.ca
306-683-6322

Regina
regina@alzheimer.sk.ca
306-949-4141

RaDAR and partner presentations & publications

Kipling Nurse Practitioner **Jean Daku** recently took part in a think tank panel on the role of partnerships in research, at the annual Canadian Consortium on Neurodegeneration in Aging Science Day & Partners Forum held October 5-7 in Vancouver.



Megan O'Connell, Jean Daku, Debra Morgan

Rural and Remote Memory Clinic neuropsychologist and RaDAR team member **Dr. Megan O'Connell** spoke on the ongoing RaDAR – Sun Country collaboration, at the annual Canadian Association on Gerontology conference held October 20-22 in Montreal.



Carrie Bourassa, Kristen Jacklin, Megan O'Connell

Several trainees supervised by RaDAR team members presented their research at the 9th Annual RaDAR Summit in Saskatoon on October 25th. Trainee recipients of the Bilokreli Family Poster Prize are conducting research covering a range of topics, including care aide perceptions of best nutritional care practices (Allison Cammer), dementia specific training in long term care (Tracy Danylyshen-Laycock), remote specialist-to-provider support (Jake Ursenbach), and characteristics of cognitively normal memory clinic patients (Ryan Verity).



Trainee recipients of the Bilokreli Family Poster Prize

Predictors of cognitive decline in a rural and remote Saskatchewan population with Alzheimer's Disease, *American Journal of Alzheimer's Disease and Other Dementias* (Drew Hager et al., August 2016)

Factor analysis of the 12-item Zarit Burden Interview in caregivers of persons diagnosed with dementia, *Journal of Applied Gerontology* (Camille Branger et al., May 2016)

Trends in medication use over 11 years in patients presenting to a rural and remote memory clinic, *Canadian Journal of Neurological Sciences* (Ryan Verity et al., January 2016)