



CCHSA CCSSMA
Canadian Centre for Health and Safety in Agriculture
Centre canadien de santé et sécurité en milieu agricole



CCHSA/CCSSMA NEWS 2010-2011

Annual Report & Summary of Activities

OUR VISION

World leadership in health of rural people.

OUR MISSION

To conduct and stimulate research, education and health promotion programs aimed at enhancing the health and well-being of agricultural, rural and remote populations.

EDITORIAL

The Canadian Centre for Health and Safety in Agriculture (CCHSA), which grew out of the College of Medicine's Centre for Agricultural Medicine celebrated its 25th Anniversary on June 14-15, 2011 in Saskatoon with a two part event—a retrospective and a look to the future to determine the issues in the next decade and beyond. The theme *“Growing on a Solid Foundation”* recognized the research, training and services in agricultural medicine over the past 25 years. Dr. John Gordon, Director, stated that “in the past quarter century CCHSA has grown to

Celebrating 25 Years!

become Canada's pre-eminent authority on agricultural occupational health.” For the celebration, *“A Brief History: 1986 - 2011”* booklet providing a

chronological history of the development of the Centre was compiled and a Commemorative Pewter Coaster with a rendering of the new building was given to each guest.



CCHSA Faculty and Staff
(Refer to page 11 for names)

CCHSA began under the direction of Dr. James Dosman often referred to as the “Father of Agricultural Medicine” in Canada. Since 1986 the Centre has grown from one faculty member to seven which include four research chairs and from two nurses to a research/support staff of thirty.

CCHSA leads a National Research Network of some 65 researchers at 15 universities across Canada, as well as

the Canadian Institutes of Health Research funded Public Health and the Agricultural Rural Ecosystem National Training Program which includes researchers at eight Canadian universities and eight international partner institutions in China, Mongolia, Africa, and Eastern Europe.

In 2007 CCHSA secured a \$15.2 M matching grant from the Canadian Foundation for Innovation and the U of S to establish the CCHSA National Agricultural Industrial Hygiene Laboratory which will occupy the ground floor of the new Academic Health Sciences Building with wet labs in the new Bio Medical building.

Over the past 25 years CCHSA's Extension Division, the Agricultural Health and Safety Network, has grown to include more than 200 Rural Municipalities in Saskatchewan representing more than 30,000 farm families.

From the initial partner-

ship between the College of Medicine at the University of Saskatchewan and the Lung Association of Saskatchewan 25 years ago to the present day the Centre has evolved and expanded its mandate in agricultural safety, rural health research and delivery of information and training programs to all stakeholders..

While we celebrate 25 successful years we continue to plan and move forward to grow a safety culture for rural Canada.

GROWING ON A SOLID FOUNDATION

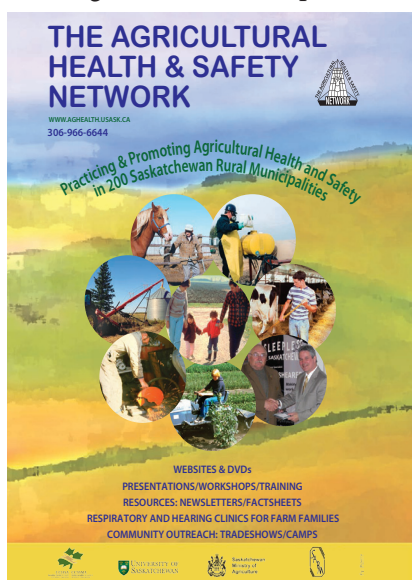


SERVICES:

Agriculture Health and Safety Network

The Agricultural Health and Safety Network (The Network) provides agricultural occupational health and safety information and programs to Saskatchewan farm families through support from CCHSA, Saskatchewan Ministry of Agriculture, membership fees and external grants.

In 2011, the Network grew its membership to a total of 202 participating RMs which includes over 29,000 farm families. The Network provides agricultural health and safety literature, newsletters, hearing and respiratory clinics, speakers, workshops, trade show displays and many other events for participating RMs. The Network benefits from input of the Steering Committee comprised of six RM councilors representing the six divisions of the Saskatchewan Association of Rural Municipalities (SARM) and a representative from the Ministry of Agriculture. Strong partnerships have been developed and maintained with provincial and national organizations resulting in the delivery of a unique agricultural health and safety program in Saskatchewan.



This poster was distributed to RM offices to promote network services

The Library of Resources

The resource and DVD library consistently receives requests for resources from the large collection housed in the Network office. The Network houses quality occupational health and safety resources on a large number of topics for Saskatchewan farmers that are distributed through traditional mail, electronically, and at trade shows. New resources include factsheets entitled Older Farmers, Children on the Farm, and the Farm Safety Plan Resource.

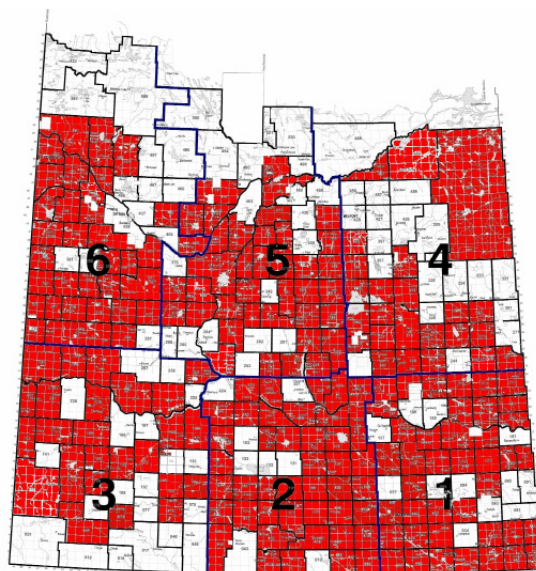
Website

As movement towards electronically based resources continues, the Network is working towards servicing the progressive and technologically savvy farmers by revamping our current website and uploading current and new resources and videos.

Newsletters & Annual Package Package

The Network News is a newsletter produced and delivered twice a year to all farm families in the Network with a focus on health and safety issues in rural Saskatchewan, research updates and Network activities. The annual package included the (Sleepless in Saskatchewan: **Making Sleep Work for You!**) resource which complements the available DVD package available at their RM office. In addition to a brochure from the Canadian Cancer Society entitled Early Detection and Screening focusing on the four most common cancers in men.

Recruitment



The Network has grown to 202 RMs and recruitment efforts are ongoing

Network Respiratory Health & Hearing Clinics

As part of Network membership, local communities and farm families are offered Respiratory Health Clinics or Hearing Conservation clinics. A Registered Nurse with experience in agricultural health and safety meets with individual producers to provide a confidential occupational health screening, health promotion counseling, and address various health concerns within their community location. Network Health Clinics were conducted in the following RMs: Spy Hill, Moosomin, Lipton, Fillmore, LaJord, Eyebrow, Stonehenge, Lumsden, Glen Bain, Swift Current, Snipe Lake, Ituna Bon Accord, Emerald, Pleasantdale, Rose-dale, Hoodoo, Osborne, Viscount, and Paynton.

Workshops & Presentations

The Network provided speakers for numerous Rate Payers' meetings, Progressive Farm Safety Days, Scientific Conferences, Educational Conferences, Professional Development Days, celebrations and other invited speaking engagements. Topics for these presentations have included the Farm Safety Plan Workshop, Sleep and Stress, Older Farmers, and Caring for the Caregiver.

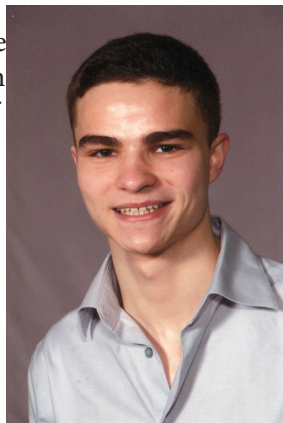
The Farm Safety Plan Workshops

Bringing together over 20 years of quality research based resources is important, so the Network focused on the Farm Safety Plan to deliver those resources to farmers and assist them in developing a Farm Safety Plan for their farm or ranch. The project was designed to consider and accommodate the diversity of Saskatchewan farming and ranching.

Farmers in and around the communities of Churchbridge, Landis, Weyburn, Pamburn, Prince Albert, Wynyard, Meacham, Rosthern, Tompkins, Benson, Viscount, Moosamin, and at the SARM convention had opportunity to take part in a Farm Safety Plan workshop. Funding assistance came from the Canadian Agriculture Safety Association (CASA). Farm Credit Canada (FCC) funding has provided support to continue these workshops.

90th Saskatchewan Association of Rural Municipalities (SARM) Scholarship

Initiated in 1995 with SARM and the continued support of the Founding Chairs, this scholarship is awarded each year to a grade 12 student who writes the best farm safety essay. This year's recipient of this scholarship is Steven Tymiak. Steven will be awarded \$1000 to use towards his post secondary education. Steven is planning to enter the College of Arts and Science at the University of Regina in the fall of 2011. Steven lives near Jasmine, SK and is from RM #246 Ituna Bon Accord.



Steven Tymiak

Rural and Dementia Care

Our interdisciplinary team of researchers has been working together since 2003. The team's focus is research aimed at improving the care of people with Alzheimer Disease and other dementias who live in rural and remote areas of

the province. Saskatchewan has the highest proportion of seniors in Canada with more seniors living in rural communities than in urban centres in our province. The risk of developing dementia increases with age, and accessing needed health care services can be challenging the further one is from an urban centre. The Rural Dementia Care team's research focuses on finding new ways to provide care and involves the use of technologies such as the province-wide telehealth network.



Relevancy

A Decision-Maker Advisory Council, comprised of front-line health care providers and managers, family members of people with dementia, health region representatives, international researchers, governmental and community based organizations, provides guidance to our team's research. The Advisory Council's input ensures that our research is relevant to the people of our province, and also helps to share team research efforts and findings back with the communities that the Council members represent.

Team Activities

The interdisciplinary nature of our team lends itself to a variety of research projects focused on rural and remote dementia care from complementary perspectives. Some projects undertaken by team co-investigators include:

**Rural and Remote Memory Clinic*

An on-going project of the rural dementia care team is the Rural and Remote Memory Clinic. The clinic focus is on diagnosis and management of atypical and complex cases of suspected dementia, where an interdisciplinary team assessment is most needed. The clinic streamlines the assessment in order to reduce repeated travel over long distances and to shorten the time to diagnosis by coordinating an interdisciplinary assessment on one day and using telehealth videoconferencing for follow-up appointments. The Rural and Remote Memory Clinic was implemented and evaluated through a CIHR funded research program. It now

currently receives funding from the Saskatchewan Ministry of Health to provide clinical services to Saskatchewan residents. A rich longitudinal database has been developed and maintained since the clinic was implemented, allowing the investigators to examine a wide range of research questions related to rural and remote dementia care.

****In-person meeting of the Decision-Maker Advisory Council and research team.***

The 3rd Annual Summit of the Knowledge Network in Rural and Remote Dementia Care was held in Saskatoon on the 28th and 29th of October 2010. Local, regional, and international researchers in the field of rural dementia care came together with Saskatchewan health care providers and decision makers who work with those affected by dementia in our province, as well as family members of people with



dementia. Through a variety of plenary sessions, interactive discussion groups, and informal discussions, participants were able to broaden their understanding of current rural and remote dementia research, as well as provide input to shape future research activities. Dr. John Keady of the University of Manchester, UK, gave the key-note address. His research focuses on the experiences of people living with dementia and their caregivers as they transition through all the stages of dementia.

****Development and Evaluation of a Telehealth-Delivered Exercise Intervention***



This study involves a small scale pilot study of a tele-delivered exercise intervention program for people with memory problems who live in rural or

remote areas. Physical activity may reduce cognitive aging and is recommended for patients diagnosed with dementia.

This pilot study includes 2 families for a total of 4 participants who will be attending from one telehealth site outside of Saskatoon. We have conducted our pre-testing and have coordinated with Telehealth Saskatchewan to conduct the twice weekly sessions in June, 2011. Engagement, acceptability, and feasibility will be assessed with audiotaped telehealth interviews following the intervention. In addition, each participant will complete measures of fitness, physical activity, mood, and quality of life.

****Dementia Diagnosis and Management***

This research project explores the assessment and management of people with dementia by family physicians and nurse practitioners in rural and remote Saskatchewan. We conducted a pilot study with 14 family physicians (FPs) and nurse practitioners (NPs) in early 2010. Since October 2010, we have conducted a subsequent study with 15 family physicians who had referred one or more patients to the Rural and Remote Memory Clinic. The results suggest that FPs would like to see more collaborative models in practice, particularly those that include a nurse or another health-care professional trained specifically in dementia care. We also found that FPs acknowledged both disadvantages and advantages of practicing rural, with drawbacks focused on physical distance from healthcare services and benefits centred around social proximity to healthcare workers, patients, and people close to patients. Our next steps are focused on developing a comprehensive program of intervention research focused on innovative models of rural and remote community-based healthcare that will improve access to appropriate prevention and intervention strategies.

****Caregiver Needs Assessment***

This study is aimed at improving our understanding of the experiences of family caregivers and the supports and services needed to help them in their role. To date, the caregiver(s) of 31 patients of the Rural and Remote Memory Clinic have been enrolled and have participated in an initial interview on clinic day. Sixteen of those participants have completed a six-month follow-up interview, and one has completed a one-year follow-up interview. New caregivers will continue to be enrolled in the study until we have developed a comprehensive understanding of the rural caregiving experience from diagnosis to one-year post-diagnosis. We will continue to conduct six-month and one-year follow-up interviews with currently enrolled participants until at least June 2012.

****Translating Research in Elder Care – TREC***

TREC is a multi-year, multi-province research study examining the role of 'organizational context' in the lives of

the people who live and work in long-term care facilities in the prairies. The study is funded through CIHR with the largest operating grant ever awarded in aging or knowledge translation research. The principal investigator is Dr. Carole Estabrooks at the University of Alberta. Dr. Debra Morgan leads the Saskatchewan TREC study. In Saskatchewan, the research team members have visited 13 long-term care facilities around the province and collected information from staff at the facilities. The data team at the University of Alberta is now analyzing the data collected from the 13 Saskatchewan facilities, and the facilities in Alberta and Manitoba – a total of 36 long-term care centres. A meeting with participating facilities and other interested stakeholders is being planned for November 2011 in Saskatoon, to report back on study findings.

Funding for our projects comes from a variety of sources: The team leader, Dr. Debra Morgan, is currently funded by the Saskatchewan Health Research Foundation and the Canadian Institutes of Health Research (Applied Chair in Health Services & Policy Research). Additional funding for team projects is provided by: CCHSA-CIHR Centre for Research Development Pilot Project and Knowledge Translation grants, and the Ralston Brothers Medical Research Fund.

Graduate Training Program in Public Health and the Agricultural Rural Ecosystem (PHARE)

The CIHR Strategic Training Program entitled, “Public Health and the Agricultural Rural Ecosystem” (PHARE) provides scholarship support along the development continuum from Masters through to Post Doctoral Fellows to train and mentor young scientists. The program continues until 2014. There is a May 31st deadline for applications.

2010-2011 PHARE Training Scholarships Awardees:

Post Doctoral Fellow: Julie Kosteniuk, University of Saskatchewan; Valérie Létourneau, Laval Université; Rasha Maal-Bared, University of Ottawa; Xiangfei Meng, University of Saskatchewan; and Zimu Yu, University of Saskatchewan.

PhD: Brenna Bath, University of Saskatchewan; Amanda Froehlich, University of Saskatchewan; Zhiwei Gao, University of Alberta; Nichole Garzia, University of British Columbia; Kerry Anne Hogan, Queen’s University; Natasha Just, University of Saskatchewan; Megan Kot, Dalhousie University; Kyungsu Kim, University of Alberta; Arcadio Viveros Guzman, University of Saskatchewan.

Masters: Pascale Blais-Lecours, Université Laval; Katherine Plewa, University of Western Ontario; and Ming Ye, University of Alberta.

National Resesarch Program

Since its inception in 2003, the National Research Program (formerly the Centre for Research Development Program) has grown to over 60 scientific collaborators and 65 students representing 17 Canadian universities across 9 provinces and 13 non-Canadian universities and other organizations. The research program covers the theme areas of What we breathe (Genetic and environmental determinants of infections), What we eat and drink (Determinants of infections), How we work (Occupational health issues), and How we live (Physical and mental health, and social issues).

The Knowledge Translation Project Program is intended to disseminate “evidence-based” knowledge aimed at improving health an/or safety in the agricultural/rural community; encourage new collaborations and knowledge exchange among stakeholders, and reach and impact upon an audience of end users.

CAPACITY BUILDING

National Partners Fund

The National Partners Fund, the successor to the Founding Chairs Program which was established in 1989, is an integral part of creating a secure financial base for CCHSA and providing opportunities for new program initiatives. A portion of the funds are used for special research projects, scholarships for graduate students and knowledge translation.

The Guardian categories, ranging from Bronze Guardians to Platinum Guardians recognize lifetime contributions of current and previous contributors in addition to new contributors.

Gold	Canadian National Railways
Silver	Farm Credit Canada Federated Co-operatives Ltd Viterra
Bronze	The Cooperators

Maura Gillis-Cipywnyk, Director of Institutional Advancement, is responsible for coordinating the program in consultation with the Management Committee which is comprised of 3 members who are Contributors and 3 members from the University of Saskatchewan. Current members include , Chairperson Glen Tully, President, Federated Co-operatives Inc; Terry Baker, Viterra, Lyndon Carlson, Vice-President, Marketing and Product Development, Farm Credit Canada and University of Saskatchewan representatives : Dr. John Gordon, Direc-

tor, Canadian Centre for Health and Safety in Agriculture, Dr. William Albritton, Dean, College of Medicine; SueVerhille-Long, Financial Services Division.

During the past year, meetings were held with numerous corporations to discuss a proposed safe farm certificate program and to promote awareness within Canadian agricultural industries, companies and associations.

Canadian AgriSafety Applied Research Program

Agrivita Canada Inc., a not for profit company, has completed its long-term sustainability plan called Canadian Agrisafe Applied Research Program (Canadian Agri-safety ARP).

KNOWLEDGE TRANSLATION AND EXCHANGE INITIATIVES

KT Resources Developed:

Bartlet K. Tick-Talk Video: Knowledge translation of protective practices against ticks and tick-borne diseases in British Columbia, BC. University of British Columbia.

Presentations:

Morgan, D., Principal Investigator: Knowledge Network in Rural and Remote Dementia Care: Healthcare Delivery Across the Continuum for Rural and Remote Seniors with Dementia. Final Report. **Presented:** 2nd Annual Summit, October 28-29, 2010, University of Saskatchewan, Saskatoon, SK.

Morgan, D., Chair: Knowledge Network in Rural and Remote Dementia Care -3rd Annual Summit. Meeting of Research team and Decision-Maker Advisory Council, CIHR-SHRF Applied Chair in Health Services and Policy Research, Saskatoon, SK, Oct 28-29, 2010.

Crossley M., PI. Development of a template for the delivery of a telehealth-facilitated support group for caregivers of individuals diagnosed with atypical dementias. Workshop on June 24, 2011, University of Saskatchewan, Saskatoon, SK.

Published Resources:

Health Works column in The Rural Councilor This SARM publication continues to host a column written by Network staff. Each article focuses on farm health and safety concerns. This year's articles included: The SARM

Scholarship Award Winning Essay, Growing Forward with a Farm Safety Plan, Farm Safety is in Your Hands: Celebrating 200 RMs and Still Growing, and Children on the Farm.

The HandiFarmer The Farmers with Disabilities newsletter hosts articles by the Network. Articles include Keeping Senior Farmers Safe, Encouraging Your Community to Farm Safely, and Activating Your Farm Safety Plan.

The Country Guide featured the Network RN in a two part article entitled The Heart of Your Farm focusing on heart disease prevention and controlling risk factors.

CCHSA Knowledge Translation Program. National Newsletter "Agricultural Health and Injury Prevention": A special issue on Research and Policy in Rural Health. Published: December 2010. Supported by the Canadian Institutes of Health Research (CIHR) Institute of Population and Public Health (IPPH).

CCHSA Knowledge Translation Program. National Scientific Network Bulletin. CCHSA National Research Program: Funding Opportunity Results. Published: June 2010. Supported by the Canadian Institutes of Health Research (CIHR) Institute of Population and Public Health (IPPH).

AWARDS: Faculty, Students & Staff:

Congratulations to Debra Morgan, Allison Cammer and team on an Education and Training Knowledge Translation Funding Award from the Canadian Dementia Knowledge Translation Network.

Congratulations to Niels Koehncke on receiving a Teaching Award from the Student's Association of the School of Public Health!

Congratulations to Josh Lawson on a CIHR New Investigator Salary Award.

PUBLISHED PAPERS: E-PUB & IN REFEREED JOURNALS

Estabrooks C, Morgan D, Squires J, Boström AM, Slaughter S, Cummings G, Norton P. The care unit in nursing home research: Evidence in support of a definition. *BMC Medical Research Methodology*, 2011; 11:46, doi:10.1186/1471-2288-11-46

Forbes D, Morgan D. Light therapy for managing symptoms of dementia: Promising results (chapter 2). In *Dementia (Volume 3 Treatments and Developments)* edited by Dr. Patrick McNamara, 2011; Santa Barbara, CA, ABC-CLIO Publications.

Innes A, Morgan D, Kosteniuk J. Dementia care in rural and remote settings: A systematic review of informal/family caregiving. *Maturitas*, 68, 34-46, doi:10.1016/j.maturitas.2010.10.002; 2011.

PUBLISHED PAPERS: E-PUB & IN REFEREED JOURNALS

Estabrooks C, Morgan D, Squires J, Boström AM, Slaughter S, Cummings G, Norton P. The care unit in nursing home research: Evidence in support of a definition. *BMC Medical Research Methodology*, 2011; 11:46, doi:10.1186/1471-2288-11-46

Forbes D, Morgan D. Light therapy for managing symptoms of dementia: Promising results (chapter 2). In *Dementia (Volume 3 Treatments and Developments)* edited by Dr. Patrick McNamara, 2011; Santa Barbara, CA, ABC-CLIO Publications.

Jansen SL, Forbes D, Duncan V, Morgan DG, Malouf R. Melatonin for cognitive impairment. *The Cochrane Database of Systematic Reviews*, 3(12). (Original publication: 2006, Issue 1. Art. No.: CD003802. DOI: 10.1002/14651858.CD003802.pub3), March 2011.

Kosteniuk J, D'Arcy C, Morgan D. Report to physicians on depression and anxiety survey. Report printed at University of Saskatchewan (10 pages); January 2010.

Lejbak L, Haugrud N, NET Team. Clinical guidelines and related research for dementia diagnosis. Report printed at University of Saskatchewan (57 pg); 2010 Revision.

Morgan D, Minish D. Knowledge network in rural and remote dementia care: Final Report, 3rd Annual Summit Oct 28 and 29th, 2010. Report printed at the University of Saskatchewan (28 pages), February 2011.

Morgan D, Crossley M, Kirk A, McBain L, Stewart N, D'Arcy C, Forbes D, Harder S, Dal Bello-Haas V, Basran J. Evaluation of telehealth for pre-clinic assessment and follow-up in an interprofessional rural and remote memory clinic. *Journal of Applied Gerontology*. Available at On-Line First, DOI:10.1177/0733464810366564, <http://jag.sagepub.com/>.

Morgan D, Innes A, Kosteniuk J. Dementia care in rural and remote settings: A systematic review of formal or paid care. *Maturitas*, 68, 17-33, doi:10.1016/j.maturitas.2010.10.002; 2011.

Narasimhan GR, Pen Y, Crowe TG, Hagel L, Dosman J, Pickett W, for the Saskatchewan farm Injury Cohort Team. Operational safety practices as determinants of machinery-related injury on Saskatchewan farms. *Accident Analysis and Prevention* 2010; Jul; 42(4):1226-32 (MSC thesis)

Slaughter S, Eliasziw M, Morgan D, Drummond N. Incidence and predictors of eating disability among nursing home residents with middle-stage dementia. *Clinical Nutrition*, 30, 172-177, 2011. Available online at <http://dx.doi.org/10.1016/j.clnu.2010.09.001>.

Slaughter S, Eliasziw M, Morgan D, Drummond N. Incidence and predictors of disability in walking among nursing home residents with middle-stage dementia: A prospective cohort study. *International Psychogeriatrics*, 23(1), 54-64, doi 10.1017/S1041610210000116; 2011.

Stewart N, D'Arcy C, Kosteniuk J, Morgan D, Forbes D, MacLeod M, Kulig J, Pitblado R. Moving on? Predictors of intent to leave among rural and remote RNs in Canada. *The Journal of Rural Health*, 27, 103-113. DOI: 10.1111/j.1748-0361.2010.00308.x.

Voaklander DC, Dosman JA, Hagel L, Warsh J, Pickett W, for the Saskatchewan Farm Injury Cohort Study Team. Farm work exposure of older male farmers in Saskatchewan. *Am J Indust Med* 2010; Jul; 53(7):706-15

CONFERENCE PROCEEDING AND ABSTRACTS:

Cammer A, Morgan D, Stewart N, Crossley M. Nursing care aide determination and reporting of aggressive incidents in long-term care. **Presented:** Gerontological Society of America 64th Annual Scientific Meeting, Boston, MA, November 18-22, 2011.

Cammer A, Morgan D, Stewart N. Non-participant observation method: The researcher as instrument. **Presented:** Innovations in Qualitative Research Conference, June 8 – 9, 2010. Saskatoon, SK.

Crossley M, Lanting S, O'Connell M, Morgan D, Daigneault D. A dementia screening protocol for aboriginal seniors. **Presented:** Alzheimer Disease International 2011. Toronto, March 26-29, 2011

Crossley M, Corney P, Poock J, Haugrud N, O'Connell M, Morgan D. Introducing a clinical dual task to facilitate diagnosis in early stage Alzheimer Disease: A modification of an experimental design. **Presented:** International Neuropsychological Society, June 30-July 3, 2010, Krakow, Poland.

Crossley M, Lanting S, O'Connell M, Morgan D. Geriatric neuropsychological services in a telehealth-facilitated interdisciplinary Rural and Remote Memory Clinic (RRMC): Innovation in assessment, interprofessional education, and intervention Paper in Symposium titled: Extending our reach: Innovative strategies for making psychological services accessible and appropriate for rural

and northern populations. **Presented:** Canadian Psychological Association Annual Conference. June 3-5, 2010. Winnipeg, MB.

Dal Bello-Haas V, Wagner Fl, Morgan D, Crossley M, O'Connell M, Kirk A, Holfeld L, Basran J. Value added? The role of the physical therapist in a Rural and Remote Memory Clinic. **Presented:** Dementia in the 21st Century, 4th International Conference, Dementia Services Development Centre. London, October 19-21, 2010.

Estabrooks C, Morgan D, Squires J, Bostrom AM, Slaughter S, Cummings G, Norton P. The resident care unit in nursing home research. **Presented:** Canadian Association on Gerontology. December 2-4, 2010. Montreal.

Forbes D, Morgan D. What does the evidence reveal about light therapy and dementia? **Presented:** Canadian Association on Gerontology. December 2-4, 2010. Montreal.

Forbes D, Morgan D. What does the evidence reveal about light therapy and dementia? **Presented:** International Conference on Alzheimer's Disease. July 10-15, 2010. Honolulu, Hawaii.

Kiryuchuk S, Gordon J, Dosman J, Duchaine C, Pickett W, MacLeod M, Laprise C, Morgan D, Senthilselvan A, Reeder B, Potter A, Guernsey J. Public health and the agricultural rural ecosystem (PHARE) training program: A Canadian Institutes of Health Research-Strategic Training Initiative in Health Research. **Presented:** Canadian Thoracic Society Annual Canadian Respiratory Conference. May, 2010. Halifax, NS.

Kosteniuk J, Morgan D, Innes A, Keady J, Goins T, Stewart N, D'Arcy C, Kirk A. Diagnosis and management of dementia: Pilot study of roles and perceived needs of rural and remote primary care providers. **Presented:** Dementia in the 21st Century, 4th International Conference, Dementia Services Development Centre. London, October 19-21, 2010.

Kosteniuk J, Morgan D, Innes A, Keady J, Goins T, Stewart N, D'Arcy C, Kirk A. Diagnosis and management of dementia: Pilot study of roles and perceived needs of rural and remote primary care providers. **Presented:** Canadian Rural Health Research Society 9th Conference. September 23-25, 2010, Fredericton, NB.

Lanting S, O'Connell M, Crossley M, Morgan D. Examining the utility of the Repeatable Battery for the Assessment of Neuropsychological Status Effort Index (RBANS-EI) in a heterogeneous dementia sample: Does memory matter? **Presented:** International Neuropsychological Association 39th Annual Meeting, Boston, February 2-5, 2011.

Lanting S, Crossley M, O'Connell M, Morgan D. Addressing the challenges and limitations for the neuropsychological assessment of older adults from rural and remote backgrounds: One approach. Paper in Symposium titled: Extending our reach: Innovative strategies for making psychological services accessible and appropriate for rural and northern populations. **Presented:** Canadian Psychological Association Annual Conference. June 3-5, 2010. Winnipeg, MB.

Mackinnon S, O'Connell ME, Crossley M, Morgan D. Comple-

tion Of Executive Functioning Tasks In A Memory Clinic Dementia Sample. **Presented:** International Neuropsychological Association 39th Annual Meeting, Boston, February 2-5, 2011.

Meng XF, D'Arcy C, Morgan D, Mousseau D. Mortality and morbidity hazards associated with cognitive status in seniors: a Canadian population prospective cohort study. **Presented:** XIII International Congress of the International Federation of Psychiatric Epidemiology (IFPE): Mental Health and Global Recession: epidemiological tools in the global village. March 30-April 2, 2011, Kaohsiung, Taiwan.

Meng X, D'Arcy C, Morgan D. Being mindful: Depression and dementia among rural and urban seniors. **Presented:** Canadian Rural Health Research Society 9th Conference. Fredericton, NB. September 23-25, 2010.

Morgan D, Kosteniuk J, Innes A, Keady J, Goins T, Stewart N, D'Arcy C, Kirk A. Role and support needs of rural primary healthcare providers in dementia care. **Presented:** Alzheimer Disease International 2011. Toronto, March 26-29.

Morgan D, Cammer A, Wickenhauser J, Walls-Ingram S. Satisfaction with telehealth in a memory clinic for rural and remote patients. **Presented:** Alzheimer Disease International 2011. Toronto, March 26-29.

Morgan D, Stewart N, Crossley M, Cammer A, D'Arcy C, Forbes D, Karunanayake C. Studying physical assault of nursing aides in long-term care: Implications for theory development and research methods. **Presented:** Canadian Association on Gerontology. December 2-4, 2010. Montreal, PQ.

Morgan D, Stewart N, Crossley M, D'Arcy C, Forbes D, Cammer A. Nursing aide reports of physical assault by long-term care residents with dementia: Theoretical and methodological implications. **Presented:** Gerontological Society of America. November 19-23, 2010. New Orleans.

Morgan D, Cammer A, Ellingboe C, Wickenhauser J. Telehealth videoconferencing in a memory clinic for rural seniors: Does it work? **Presented:** Innovations in Qualitative Research Conference, June 8 - 9, 2010. Saskatoon, SK.

O'Connell ME, Crossley M, Kirk A, Morgan D. RBANS Cortical-Subcortical Classification Algorithm in a Memory Clinic Dementia Sample. **Presented:** International Neuropsychological Association 39th Annual Meeting, Boston, February 2-5, 2011.

O'Connell M, Crossley M, Morgan D. Impact of Technology on Telehealth-Based Support Group for Rural Spousal Caregivers of Patients Diagnosed with Atypical Dementias. **Presented:** Gerontological Society of America, New Orleans, November 19-23, 2010.

Schmaltz H, Jamieson J, Desjarlais-deKlerk K, Silvius J, Jennett P, Morgan D, Straus S. Specialized geriatric assessment using telehealth versus usual practice: A systematic review. **Presented:** Canadian Geriatrics Society Annual Meeting, Vancouver, April 14-16, 2011.

Stewart N, Morgan D, Cammer A, Karunanayake C. Gender differences in caregiver distress over time. Presented: Alzheimer Disease International 2011. Toronto, March 26-29, 2011.

Stewart N, Morgan D, Forbes D, Karunanayake C, Wickenhauser J. Caregiver distress prior to a family member's dementia diagnosis: Gender and generational contrasts. Presented: Gerontological Society of America. November 19-23, 2010. New Orleans.

Stewart N, Morgan D, Cammer A, Wickenhauser J. The experience of sons as caregivers for parents with dementia, living in rural and remote areas of Saskatchewan. Presented: Innovations in Qualitative Research Conference, June 8 – 9, 2010. Saskatoon, SK.

Strauss C, Haugrud N, Crossley M, Morgan D. Delayed memory, but not executive skills, predicts functional impairment in newly diagnosed Alzheimer's disease. Presented: International Neuropsychological Society 38th Annual Meeting, Feb 3-6, 2011, Acapulco, Mexico.

Walls-Ingram S, Morgan D, Cammer A, Crossley M, Forbes D, Innes A, O'Connell M, Stewart N. Caring for someone with dementia in a rural or remote setting: Initial findings from a longitudinal needs assessment of informal caregivers. Presented: Canadian Association on Gerontology. December 2-4, 2010. Montreal, PQ.

RESEARCH GRANTS RECEIVED:

Morgan D, Cammer A. Rural and remote dementia care: Implementation and Evaluation of a Knowledge Exchange Initiative. Canadian Dementia Knowledge Translation Network-Alzheimer Society of Canada, Education and Training Knowledge Translation Award. Awarded April 2011. \$20,000.

Morgan D. Best practices in rural and remote dementia care: Moving the agenda forward- Summit of the Knowledge Network in Rural and Remote Dementia Care. Canadian Institutes of Health Research: Meeting, Planning, & Dissemination (MPD) Events Grant (Priority Announcement, Health Services & Policy Research). Awarded May 2010. \$13,500.

Gordon J, Asselin J, Ulmer K. Update on the current Canadian Farm Safety Situation: A workshop. Funded by: Canadian Agriculture Safety Association. 2009-2010. \$15,065.

Gordon JR. ELR-CXC chemokines in CF inflammation. Canadian Cystic Fibrosis Foundation Operating Grant. 2010-2013. \$240,000.

Gordon JR. & collaborators. Update on the current Canadian Farm Safety Situation: a workshop. Canadian Agricultural Safety Association. CASHP grant. 2009-10. \$30,130.

CONTINUING RESEARCH GRANTS

Dosman JA & Collaborators. National Agricultural Industrial Hygiene Laboratory. Funded by: Canada Foundation for Innovation 2007-12. 14.6M (CFI contribution, 5.8M).

Dosman J, Pahwa P, Rennie D, Senthilselvan A, Lawson J, Kirychuk S, Gordon J, Pitblado R, Dyck R, Jensen B, Pickett W. Saskatchewan Rural Health Study. Funded by: Canadian Institutes of Health Research (CIHR) 1.7M, 2008-2014.

Estabrooks C, Cummings G, Degner L, Dopson S, Laschinger H, Leiter M, Morgan D, Norton P, Profetto-McGrath J, Rycroft-Malone J, Smith M, Sales A. Translating Research in Elder Care (TREC). \$4.7 million. Canadian Institutes of Health Research, Canadian Institutes of Health Research. Awarded January 2007.

Forbes D, Morgan D, Strain L, Mendelsohn M. Policy, program, and practice Dialogue Summit: Rural home care's use of research evidence to inform dementia care. \$19,248. Canadian Dementia Knowledge Translation Network and the Alzheimer Society of Canada, Education and Training Knowledge Translation Award. Awarded April 13, 2010 for one year.

Forbes D, Gibson M, Markle-Reid M, Morgan D. Developing dementia care decisions through knowledge exchange in rural settings. \$192,063 over 2 years. Alzheimer Society of Canada and partners (Canadian Nurses Foundation, CIHR Institute of Aging, Parkinson Society of Canada). Awarded Feb 2010 for 2 years.

Estabrooks C, Cummings G, Degner L, Dopson S, Laschinger H, Leiter M, Morgan D, Norton P, Profetto-McGrath J, Rycroft-Malone J, Smith M, Sales A. Translating Research in Elder Care (TREC). Funded by: Canadian Institutes of Health Research, Canadian Institutes of Health Research. \$4.7 million. Awarded January 2007.

Gordon JR, Cockcroft D. Research Group Development Grant. Airways Research Group. Funded by: Saskatchewan Health Research Foundation (SHRF). March 2009-March 2011. \$50,000/annum for two years.

Gordon JR, Kirychuk S, Dosman J, Morgan D, Potter A, Reeder B, Bharadwaj L, Epp T, Pahwa P, Rennie D, Singh Baljit. Public Health in the Agricultural Rural Ecosystem. Funded by: CIHR Strategic Training Initiative in Health Research. April 2009-March 2014. \$325,000/annum for six years

Gordon JR. Airways Research Group. Funded by: Saskatchewan Health Research Foundation Group Development Grant. 2009-11. \$100,000.

Gordon JR. Mechanisms mediating the effects of tolerogenic dendritic cells. Funded by: Canadian Institutes of Health Research. 2008-13, \$675,000.

Gordon JR. & collaborators. Low stress cattle-handling train-the-trainer workshop series CASHP grant. 2009-10. \$42,340.

Halayko A, Gavami, Gordon JR. The A8/A9-RAGE Axis in Airway Inflammation, Hyperresponsiveness, and Remodeling. Canadian Institutes of Health Research Operating grant. 2010-15. \$745,000.

Janzen B, Semchuk K, Prekumar K, Backman A, Pahwa P. Technology Enhanced Learning (TEL) projects for Course Development Grant, 2009-2010. \$128,000.

Kiryuchuk S. New Faculty Equipment funds. Funded by: University of Saskatchewan, VP Academic and Provost. January 31, 2009- January, 2012. \$15,000.

McBain L, Stewart N, Morgan D, Bourassa C, Cammer A. Evolution of assisted living, personal care, and long-term care facilities in Aboriginal communities. Funded by: Canadian Centre for Health & Safety in Agriculture (CCHSA) Centre for Research Development Pilot Project. February 2010 - March 2011. \$20,000

Morgan D. CIHR Applied Chair in Health Services & Policy Research, Healthcare Delivery Across the Continuum for Rural and Remote Seniors with Dementia, \$925,000. Canadian Institutes of Health Research in partnership with Saskatchewan Health Research Foundation. Awarded October 2008 for period March 1, 2009 to April 30, 2014.

Morgan D, Stewart N, Crossley M, Forbes D, Innes A, Cammer A, M O'Connell. Caring for a family member with dementia: Identifying the support and service needs of rural family caregivers. Funded by: Canadian Centre for Health & Safety in Agriculture (CCHSA) Centre for Research Development Pilot Project. January 2010 - December 2011. \$20,000.

Pahwa P, Karunanayake C. Investigation of Longitudinal Patterns of Changes in Mental Health of Immigrant Women: Comparison of Missing Data Approaches in Longitudinal Data Analysis. Funded by: Canadian Initiative on Social Statistics - Access to Research Data Centres – SSHRC (Social Sciences and Humanities Research Council of Canada). 2008-2010.

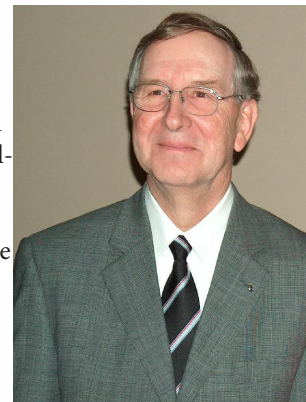
Rennie D, Lawson J, Gordon JR. Canadian Support for the Belarus, Ukraine, Poland Asthma Study. Global Partners Fund (University of Saskatchewan). 2010-11. \$10,000

Stewart N, Morgan D, Cammer A. Experiences of sons as caregivers of mothers and fathers with dementia: Understanding unique contributions and challenges in rural and remote areas. Funded by: Canadian Centre for Health & Safety in Agriculture (CCHSA) Centre for Research Development Pilot Project. February 2010 to March 2011. \$20,000.

APPOINTMENTS:

Dr. James A. Dosman: Distinguished Research Chair, University of Saskatchewan

The “father of agricultural medicine” in Canada, has devoted his career to improving the health of, and preventing injury to, farmers and their families. He began at the U of S, followed by a residency and postdoctoral fellowship at McGill University that established him in his specialty of respiratory medicine. He returned to the U of S to found the Division of Respiratory Medicine in the College of Medicine in 1975, and, 11 years later, the Centre for Agricultural Medicine – now known as the Canadian Centre for Health and Safety in Agriculture (CCHSA). The organization is the only one in Canada to provide research, education, and health promotion to agricultural and rural populations – a crucial service to the families working in one of the most dangerous occupations in both Canada and the U.S.

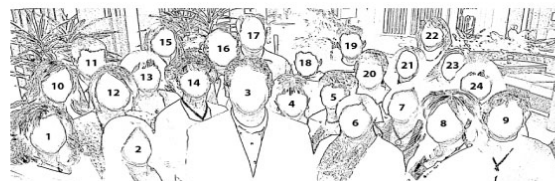


Dosman worked with local municipal governments to establish the Agricultural Health and Safety Network, which provides health and safety education services to thousands of farm families. He has been instrumental in bringing these programs to the national level. His work to reduce dangers to farm families across the province and the country have won him numerous awards, as well as accolades from the farm communities to which he has devoted his career.

Fall 2012: Dr. James A. Dosman has been elected to the Royal Society of Canada

(Refer to photo on first page)

1	Leslie Holfeld	9	Donna Rennie	17	Niels Koehncke
2	Natasha Nundi	10	Allison Cammer	18	Toni Barry
3	John Gordon	11	Duane Minish	19	Josh Lawson
4	Lori Lockinger	12	Debra Morgan	20	Lorene Jewitt
5	Anna-Marrie Mechor	13	Iris Rugg	21	Sueli de Freitas
6	Punam Pahwa	14	Sue Dosman	22	Shelley Kiryuchuk
7	Chandima Karunanayake	15	Bonita Mechor	23	Johanne Asselin
8	Kendra Ulmer	16	James Dosman	24	Maura gillis-Cipywnyk



HIGHLIGHTS:

CCHSA's future home in the University of Saskatchewan Academic Health Sciences Centre



Pictures taken from May to October 2010