



AVAILABLE

Discovery Days

DEMONSTRATIONS



THE AGRICULTURAL HEALTH
AND SAFETY NETWORK



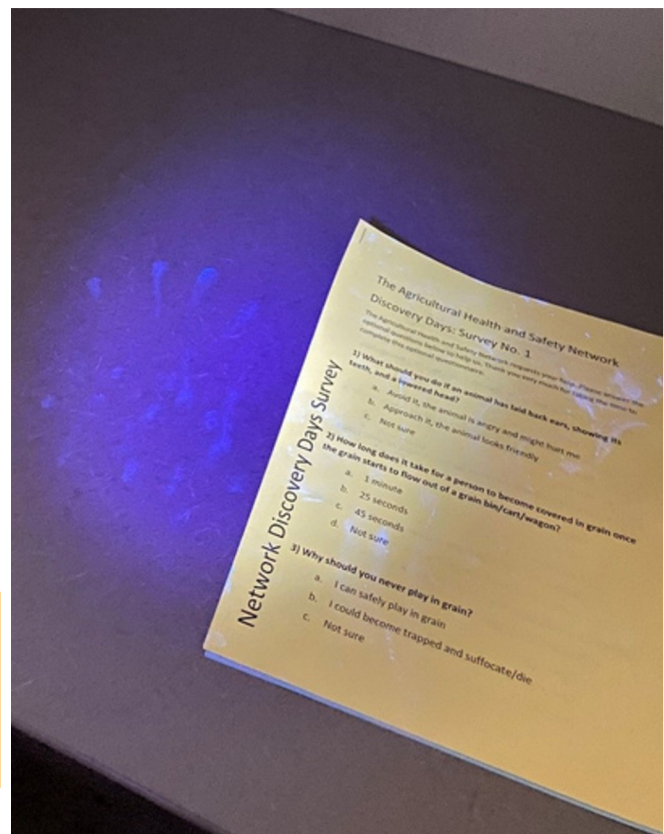
HAZARD BOARD

There are many hazards on the farm! We ask Discovery Days participants to spot the hazard. We discuss farm machinery hazards, animal hazards and grain entrapment hazards. We remind students of some of hazards on the farm and how to avoid them.



GLOW GERM PRESENTATION

We discuss the importance of handwashing. With this demonstration the students learn how easily “germs” are transmitted between people. We discuss how the germs enter our body as well as strategies to keep the “germs” out.





Todd's Discovery Board

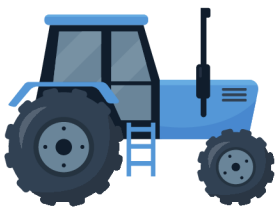


Students can come up and pick a question to answer and they lift the flap to see if they are correct. We cover fire safety, hearing safety, animal safety and grain safety.



GRAIN SAFETY

Timmy has climbed into the grain wagon and not told anyone. We demonstrate how quickly you become engulfed in grain once the grain starts to flow. We discuss what happens as you sink, the pressure the grain exerts on your body as well as how much force it takes to rescue someone.



ROLL-OVER PROTECTIVE STRUCTURE (ROPS)

We discuss the importance of having a roll over protective structure on your tractor in the event of a roll over. We emphasize that you have to wear a seat belt when your tractor is equipped with a ROPS. A bulletin is sent home with the students in their take home packages may make it possible for an adult to retrofit a ROPS an older tractor still in use on the farm. These kinds of tractors are usually the ones the students first learn to drive on the farm.



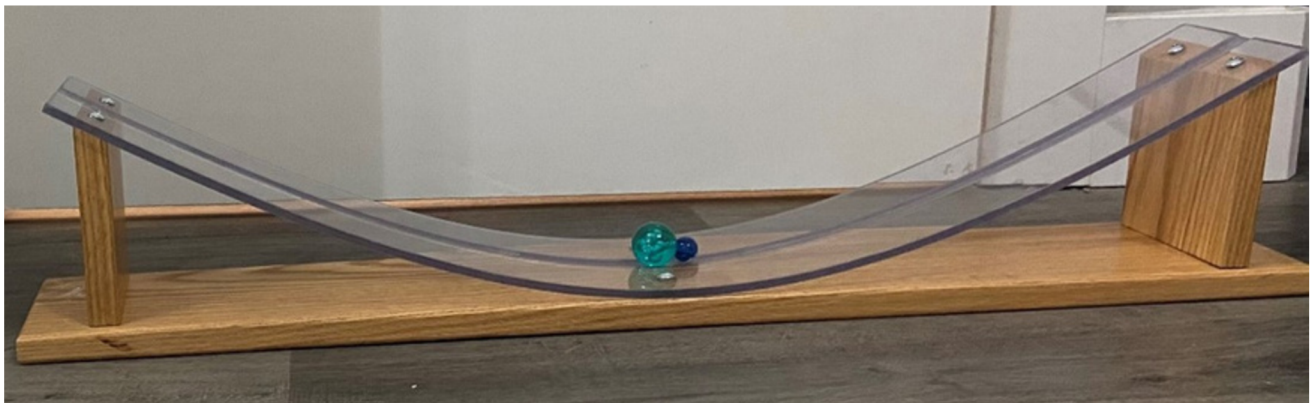


Brain Health

This presentation reinforces the importance of protecting the brain. Some discussion points are what are some of the symptoms of a concussion. The importance of wearing the correct helmet for the activity. We use eggs to represent how fragile the human head is.



MASS FORCE DEMONSTRATION

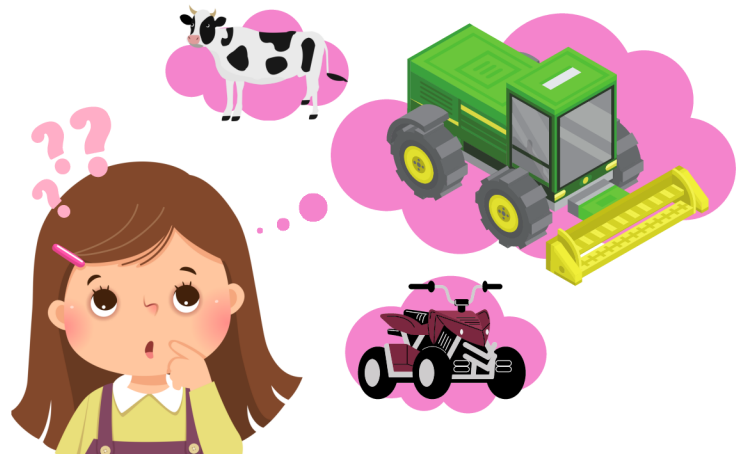


This presentation demonstrates what happens when a large animal collides with a child. We use this demo to discuss such things as what could happen if an animal kicks us. We discuss how to approach an animal and how to know when an animal is angry.



SAFE OR NOT SAFE

We have a set of 28 pictures that the students can tell us if this is safe or not safe and why it is safe or not safe. We have pictures with water safety, electrical safety, ATV safety, animal safety, and machinery safety.



Sun Safety

We talk about UV rays and the damage they can do to the skin. We discuss when the best time is to go out in the sun. How we can protect ourselves from the UV rays.



PTO SAFETY



One component of the demonstration is an entanglement scenario. A Power Take Off (PTO) rotates so fast and loose clothing, hair and other things can get entangled in the PTO. We talk about safety around a PTO and how entanglement is avoidable as well as reaction times. This demonstration provides the students with an overview of the importance of safety around a PTO.



We use the Wheel of Misfortune to reinforce what the students have learned in the Discovery Days presentations. The wheel had categories on it and we ask the students questions that were answered in the Discovery Day presentation. We play in teams and see how many correct answers they can get in the allotted time.



This demonstration's focus is on how harmful chemicals can look like things that we would eat or drink and how hard it can be to tell the difference. In one tube we have a chemical and in the other a substance that students might eat or drink regularly. We stress the importance of labeling containers and keeping things in their original containers. We emphasize that the students often must guess which one is the chemical.

If you would like any of these presentations for your school, please contact:

Shelly Sander

shs954@mail.usask.ca
1-306-966-6644



UNIVERSITY OF SASKATCHEWAN
Canadian Centre for Rural
and Agricultural Health
CCHSA-CCSSMA.USASK.CA



BE WHAT THE WORLD NEEDS

