

THE AGRICULTURAL HEALTH AND SAFETY NETWORK



Partnering for Success

SUMMARY OF ACTIVITIES
April 2018 - March 2019



UNIVERSITY OF SASKATCHEWAN

Canadian Centre for Health
and Safety in Agriculture

CCHSA-CCSSMA.USASK.CA

The background of the entire page is a light green, textured image of wheat stalks. The stalks are thin and elongated, with some showing the grain heads. They are arranged in a way that creates a sense of depth and movement, with some stalks in the foreground and others receding into the background.

1988 - 2018

30 years caring about farm families

March 2019

MESSAGE FROM THE DIRECTOR



Dr. Shelley Kirychuk, Acting Director,
Canadian Centre for Health and Safety in
Agriculture; Specialist in Industrial Hygiene,
Network Faculty Advisor

The role of an Acting Director can take many directions. The focus of my year was 'partnering for success'.

I have been with the CCHSA for many years and in my early career worked as a nurse with the AHSN. However, I am new to overseeing the activities of the AHSN. I continue to be amazed by how much is accomplished within the AHSN each year. The partnerships including those with Saskatchewan Association of Rural Municipalities, the Ministry of Agriculture, farmers, and industry are unique, world renowned, and speak to the nature of how we work in Saskatchewan.

I began my year by attending Ag in Motion. Standing on the bald Saskatchewan prairie in 38 degree heat gives one a true Saskatchewan farming perspective. I was not only overcome by the heat but I was yet again amazed by the spirit of Saskatchewan people. I attended the inaugural Field of STARS at the Ag in Motion site, where I witnessed the power and the impact of people to support the STARS air ambulance. This is an imperative service for rural people. Its impact was showcased including its role in the Humboldt Bronco's bus tragedy.

During the year we pushed forward on many initiatives with the focus being 'partnering for success'. I strongly believe in the power of partnering and we in Saskatchewan are true leaders in this area. The activities in this annual report highlight the importance and impact of these continued partnerships.

The strong relationship between CCHSA and the Saskatchewan farming community is exemplified by the Elkow family fund

This fund was established for CCHSA at the University of Saskatchewan in 2012 by the estate of Helen Elkow. From the will of Ms Helen Elkow, it stated that "after the death of both of my brothers, namely Peter and Philip, I direct my Executor to sell my farm land, for the best price available (and my house if it has not been previously sold) as well as all other assets if any, pay up all the loans, and donate the balance of the money in my Estate to the Centre for Agricultural Medicine for research in the name of the Elkow family – Helen, Peter and Philip." We are revered by the bequest and want to ensure we honour the intent of the Elkow family. The funds will support graduate research training. The award recipients, their project area, and the results of their projects will be highlighted during the AHSN annual meeting each year at SARM. This process will highlight the effect of a bequest for CCHSA, the recipient, and Saskatchewan farmers, and exemplify the cycle of impact that can result from a bequest.

It has been a great pleasure to work alongside our partners in effecting safe and healthy Saskatchewan farms.

Dr. Shelley Kirychuk,
Acting Director

DISCOVERY DAYS

WHAT IS A DISCOVERY DAY?

Agriculture continues to be a hazardous occupation as the farm is both a home and workplace for many farm families across Saskatchewan. Discovery Days focus on providing farm health and safety information to school children in Grades 4-6 residing on Saskatchewan farms.

The activities discussed at Discovery Days include helmet safety, germ safety, farm hazard identification, grain safety, chemical safety, machinery safety, and Rollover Protective Structures (ROPS) demonstration. In 2018, 3,637 children across Saskatchewan participated in a Network Discovery Day and we are expecting this number to increase as a result of a new partnership between the Agriculture Health and Safety Network, Saskatchewan Wheat Development Commission, and Saskatchewan Canola Development Commission.

New this year, is the implementation of questionnaires at each Discovery Day. Children participating in the Discovery Day will be asked to complete a short test prior to and after completing the Discovery Day. These pre and post tests will serve as a tool to evaluate the effectiveness of the Discovery Days program and help guide future program development.



WHO CAN HOST A DISCOVERY DAY?

This educational program targets students in Grades 4-6 in Saskatchewan who attend schools located in rural municipalities (RM) which are members of the Agricultural Health and Safety Network. To date we have 213 RMs as members of the Agricultural Health and Safety Network.

INCREASING CAPACITY

Our capacity to reach more children is growing in 2019 as we launched our new Discovery Days expansion program. This opportunity was possible thanks to a new partnership established between the AHSN, Saskatchewan Wheat Development Commission and the Saskatchewan Canola Development Commission. This project is focusing on increasing capacity to deliver the Discovery Days program to more schools in Saskatchewan. This program included hiring 5 highly qualified educators from across Saskatchewan who will help deliver Discovery Days each year in Saskatchewan.

SPONSORSHIP

Thank you to the Saskatchewan Wheat Development Commission and Saskatchewan Development Canola Commission for your partial sponsorship of the Network Safety Discovery Days.





NETWORK DISCOVERY DAYS EXPANSION: TRAIN THE TRAINER

On January 14 2018, our 5 new Discovery Day educators gathered at the Canadian Centre for Health and Safety in Agriculture for a Discovery Days training session. The train-the trainer activities included: (1) an introduction to the Agricultural Health and Safety Network programs and partnerships, (2) developmental stages of learning for Grades 4-6 and classroom management and,

(3) circuit through the 4 Discovery Day stations which included (a) hazard identification, (b) helmet safety, (c) grain safety and (d) germ safety. The educators were given an opportunity to work one-on-one with a Network representative to practice each station before demonstrating a chosen presentation to the entire group at the end of the day. This educational day concluded with a presentation on the pre and post-tests, which is an exciting addition to upcoming Discovery Days, as it presents an opportunity to evaluate and improve this already successful program.



DISCOVERY DAYS PRESENTATIONS

RM # 108 of Bone Creek	Sunset Hutterite Colony	March 6, 2018
RM # 108 of Bone Creek	Simmie Hutterite Colony	March 6, 2018
RM # 51 of Consul	Consul School	March 7, 2018
RM # 259 of Eston	Eston School	April 24, 2018
RM # 232 of Burstall	Burstall School	April 25, 2018
RM # 487 of Nipawin	PASD/Nipawin	April 26, 2018
RM # 4 of Bienfait	Weldon School	May 2, 2018
RM # 38 of Radville	Radville School	May 2, 2018
RM # 76 of Pointex	Ponteix School	May 7, 2018
RM # 135 of Hodgeville	Norfolk School	May 8, 2018
RM # 111 of Maple Creek	Downie Lake Colony School	May 18, 2018
RM # 111 of Maple Creek	Box Elder Colony School	May 18, 2018
RM # 160 of Pense	PASD/Belle Plaine Colony School	June 14, 2018
RM # 213 of Saltcoates	Saltcoates School	September 18, 2018
RM # 247 of Kelliher	Kelliher School	September 19, 2018
RM # 163 of Mortlach	PASD/Mortlach	September 26, 2018
RM # 259 of Eston	PASD/ Eston	October 2, 2018
RM # 344 of Corman Park	Clavet School	March, 2019

ACTIVITIES AND OUTPUTS

All resources are available on website: aghealth.usask.ca

New/Updated Resources

Low Stress Cattle Handling

The Low Stress Cattle Handling resource was updated along with the poster and presentation. The updated resource focuses on why low stress cattle is important for both producers and livestock, provides information on handling and moving cattle and on danger of cattle. Thank you to Dr. Diego Moya for reviewing this resource and to Katelyn Smith, RN for her contribution.



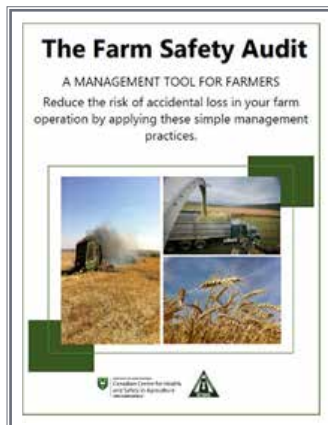
Older Farmers Resource

Updates were made to the Older Farmers resource that included more up-to-date information for older farmers and a revised look.



Farming & Mental Health: Farm Stress Inventory Checklist

This resource encourages farmers and ranchers to take an inventory of their current situation to assess their unique stressors.



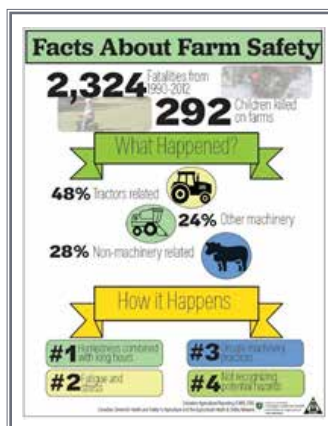
Farm Safety Audit

The Farm Safety Audit was revised and developed into a fillable PDF in addition to being available as a print copy.

PUBLICATIONS

SARM provides the Network with the opportunity to include a quarterly article in the "Rural Councilor Magazine" to promote the Network as well as to provide Farm Health & Safety messages. Articles this past year included:

- The Agricultural Health & Safety Network Is 30 years Old and Stronger Than Ever
- Discovery Days recruitment of Educators
- The Power of Exercise, Sleep and Good Nutrition for Your Mental health
- Join Us for a 4 part Webinar Series on Farm Health & Safety
- RMs! Are You Interested in Hosting a Farm Safety Education Day in Your Schools?



Farm Safety Poster

The Farm Safety Poster was developed to be a 1-page flyer for use at trade shows as a simple, yet informative resource about the injury statistics in farm safety.

We are on Social Media!



- Our Twitter following has reached over 500 followers and keeps on growing.

Visit us @SaskAgSafety on Twitter for daily health and safety tips, articles and links to our resources.



- On Facebook @ Agricultural Health & Safety Network for agricultural health and safety related tips and articles.

Follow us to stay up to date on events and what's happening at the Network!

Network Newsletters

SPRING ISSUE 2018

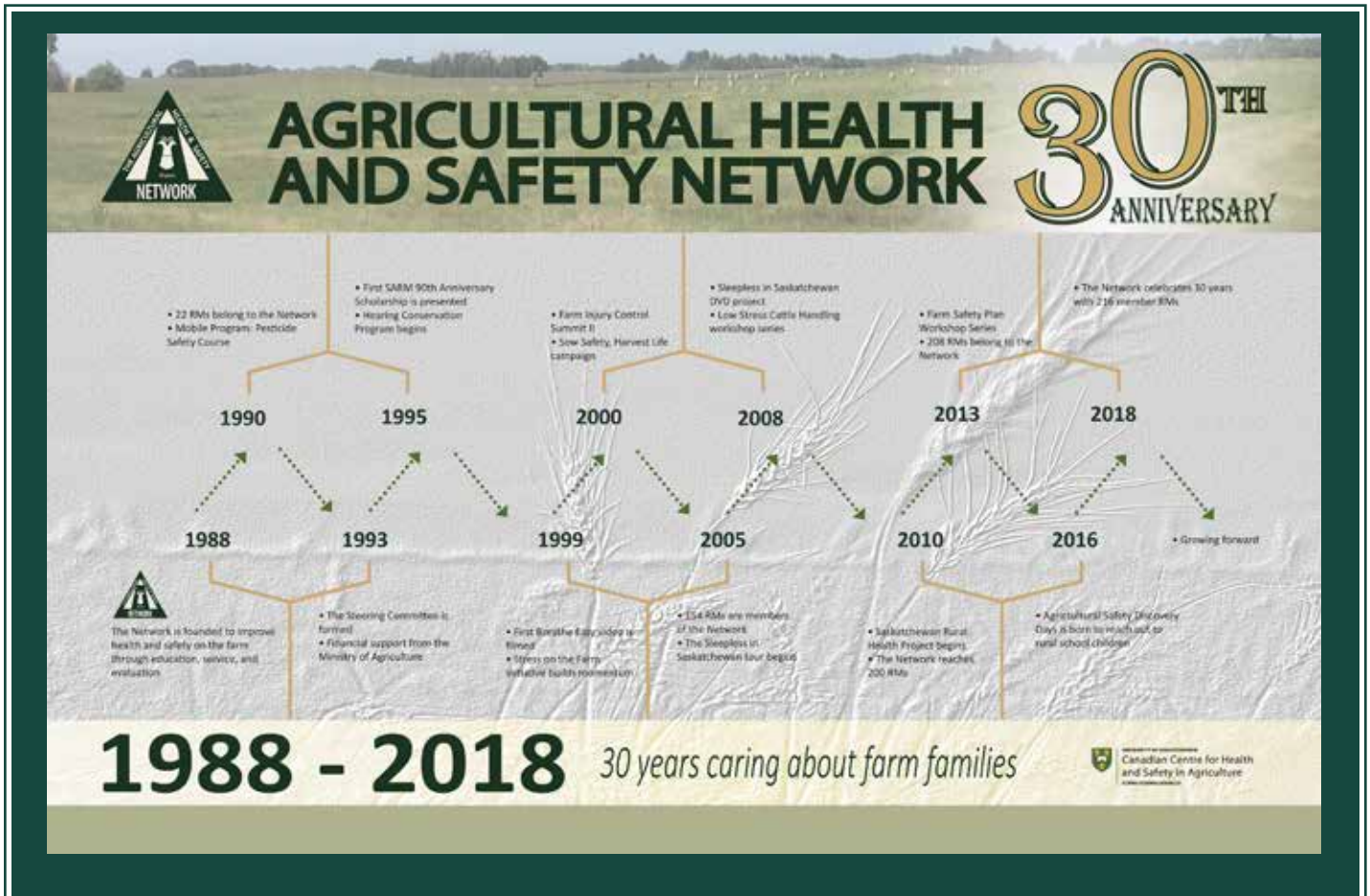


This issue highlighted our Mental Health resources and Rural Stress Toolbox; and also included information on personal protective equipment, Northern Strands Fall Protection systems and the importance of cancer screening.

WINTER ISSUE 2018



Our Winter issue again focused on mental health and increasing awareness in the agricultural community through the Do More Ag Foundation. Other articles included posture tips for a healthy back from the Saskatchewan Farmers Back Study, resources for living with MS in rural Saskatchewan, current research at CCHSA and an update on the growing Discovery Days program.



Partnerships

This year Farm Credit Canada (FCC) partnered with the Network to deliver a four part webinar series about farm health and safety. Each webinar was presented live and recorded for those unable to participate to view at their leisure. The webinar videos are available on the Network website under resources and are also available in French. Thank you to FCC for funding this worthwhile pilot project.



[Stress: Farming and Mental Health Webinar](#)

Mental health has become an important topic in the media. This timely webinar focused on the Farm Stress Initiative, and covered the topics of signs of stress, ideas for relaxing and how to prepare yourself in the 'off-season' to better handle stressful times.

[Rollover Prevention Strategies Webinar](#)

Tractor run-overs and rollovers are the leading cause of injury and death on farms. This webinar focused on using case studies to provide examples of how to prevent rollovers. Additionally, information was provided on building or purchasing your own rollover protective structures (ROPS) for older model tractors.

[Save your Breath: Respiratory Health on the Farm Webinar](#)

The farm environment has many respiratory exposures from grain dust to pesticides and herbicides. Information on common respiratory hazards around the farm were identified, along with symptoms of respiratory illness including farmer's lung. The topics of respirator use, selection and maintenance were also addressed.

[A Good Night's Sleep: Sleep and Farming Webinar](#)

One of the first things to be cut short during busy times is sleep. Highlighting some of the key points of the Sleepless in Saskatchewan DVD produced by the Network, this webinar provided tips for better sleep, how to recognize when you are sleep deprived along with the hazards of sleep deprivation and sleep apnea.



What Did You Say? How to Prevent Noise Induced Hearing Loss Resource Update

In partnership with the Canadian Agriculture Safety Association (CASA), the Network updated and revised the ***What Did You Say? How to Prevent Noise Induced Hearing Loss*** resource in early 2019. The original hearing loss resource was developed in 2007 and updates were needed in the areas of noise cancelling headphones, dosimeter Apps for SmartPhones and a section dedicated to protecting the hearing of youth on the farm. The other aspect of updating the resource was to ensure that it encompassed the variety of different types of agriculture across Canada. Care was taken to include sources of noise on different types of livestock farms, orchards, forestry and fishing.



The updated resource was electronically distributed by CASA on a national scale and is part of the resources available through the Network in both an electronic and a printed version.

Canadian AgriSafety Applied Research Program 2014-2018



The Canadian AgriSafety Applied Research Program wrapped up in March 2018. Knowledge translation (KT) activities in the final year of the program were directed toward final summary outputs and highlighting the achievements of each project. In the final year of the project thirteen information bulletins were produced

along with a final four page summary and project videos. The KT team organized and hosted an Annual Collaborative Meeting of the research teams in Quebec City in the fall of 2018. The meeting was an opportunity for teams to get together to discuss progress, outputs and plan for the future.

The Agricultural Health and Safety Network Rural Stress Toolbox

The Network has provided stress related resources, workshops and health clinics to Saskatchewan farm families for over 20 years. In 1999, the Network began a Farm Stress initiative in a strategic partnership with the Farm Stress Line Unit, numerous stakeholders, and producer focus groups. This partnership identified that weather, debt, long hours of work on the farm and off-farm jobs, powerlessness over commodity prices and government policy contributed to high stress levels. The goal was to produce resources and outreach events in a format that farmers would be comfortable using.



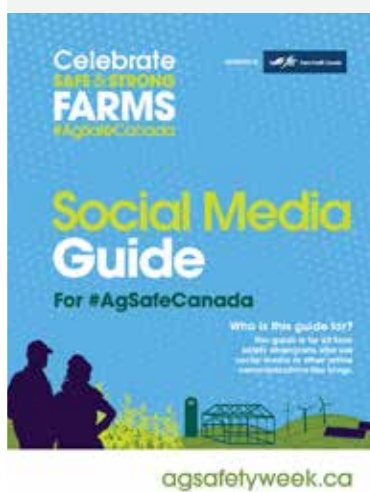
The Network takes a holistic proactive approach to mental health, physical health and safety for our producers. The Network will continue to offer resources and activities to farmers to encourage building strength and resiliency to weather the storms of agriculture production.

The Network continues to focus on mental health by offering resources and activities:

- Farm Stress Workshops: held throughout Saskatchewan
- A new electronic Farm Stress Inventory (checklist)
- The Daily Chore (2016 Stress resource)
- Farm stress is a frequent twitter topic
- Farming and Mental Health Webinar (partnership with FCC)
- Network News articles (mailed out to 27,000 farm families). Focus on the stress in farming as well as articles published in the Peavey Mart and Rural Councilor magazines.
- Network participation in "Breaking Barriers: A Journey to Mental Wellness" conference (Jan, 2019) to empower community dialogue around mental health.

Safe & Strong Farms #AgSafeCanada

This year Canadian Agricultural Safety Week takes place March 10-16, 2019. The theme is Build an AgSafeCanada. The aim of the "Safe & Strong farms" campaign is to empower farmers, farm families and farming communities to build (2019), grow (2020) and lead (2021) the agricultural industry in safety and sustainability. The Network is promoting the CASA AgSafe Ribbons campaign media kit in support of Safe & Strong Farms at clinics, workshops and tradeshow events.



THE AGRICULTURAL HEALTH AND SAFETY NETWORK - CARING ABOUT FARM FAMILIES FOR 30 YEARS!

Health & Safety Clinics: Empowering Farmers to Enhance Their Health and Safety



Health and Safety Clinics for Farmers offer the unique opportunity for farm families and farm workers to meet with a trained agricultural health and safety registered nurse, in a confidential environment, for health and safety checks tips tailored specially to their agricultural exposures and risks. Participants receive current health and safety information and education specific to reducing agriculture workplace hazards and improving personal health. Examples of common concerns addressed include: grain safety, animal safety, farm safety audits, children safety on the farm, blood pressure, diet, exercise, farm stress, sleep, and personal protection equipment selection. Health and safety resources and suggested referrals are offered to optimize personal health and safety of the participant.

These clinics are offered to the Network RM members in the form of either a Respiratory Health & Safety Clinic or a Hearing Loss Prevention Clinic that is hosted in their local RM community. In addition, several RMs have held Hearing Loss Prevention clinics for RM employees in conjunction with Network clinics.

Farmers also have the option to book an appointment for hearing testing, lung function testing, and respirator fit testing at the ONE2ONE Network Clinic located at the Canadian Centre for Health and Safety in Agriculture (CCHSA) at the University of Saskatchewan in Saskatoon.

The Network has also offered clinic learning experiences for medical and nursing students at the ONE2ONE Health & Safety Clinic for Farmers.

IS YOUR RM INTERESTED IN A ONE2ONE HEALTH CLINIC?
PLEASE CALL TO BOOK AN APPOINTMENT:
(306) 966-6643



Agriculture Health and Safety Alliance

The Network has partnered with the Ag Health and Safety Alliance to work together to bring the Gear Up for Ag Health and Safety™ Program to agriculture college students and producers in Saskatchewan. In 2019, the Network is working to secure funding and new partnerships to allow delivery of this dynamic program to the next generation of agriculture in Saskatchewan.

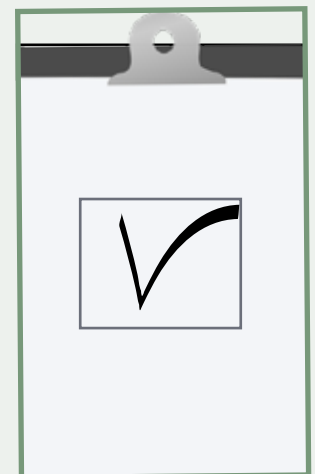
The Gear Up for Ag Health and Safety™ program is designed for post-secondary Ag students attending trade schools, colleges and universities to provide agricultural specific health and safety education. In addition, the Network is looking forward to working with the Alliance to adapt this program to include multi-generational farmers and Ag workers. The program delivery will be a combination of an interactive lecture and hands on demonstrations. Each program will be customized based on available time in the classroom, regional agricultural exposures and results from a standardized pre-survey administered prior to the program presentation. The program will include the distribution of a Gear Up for Ag™ PPE kit to each student and instructor. The PPE kit includes safety glasses, hearing protection, disposable respirators, reusable cartridge respirator, P100 cartridges, coveralls and chemical resistant gloves.



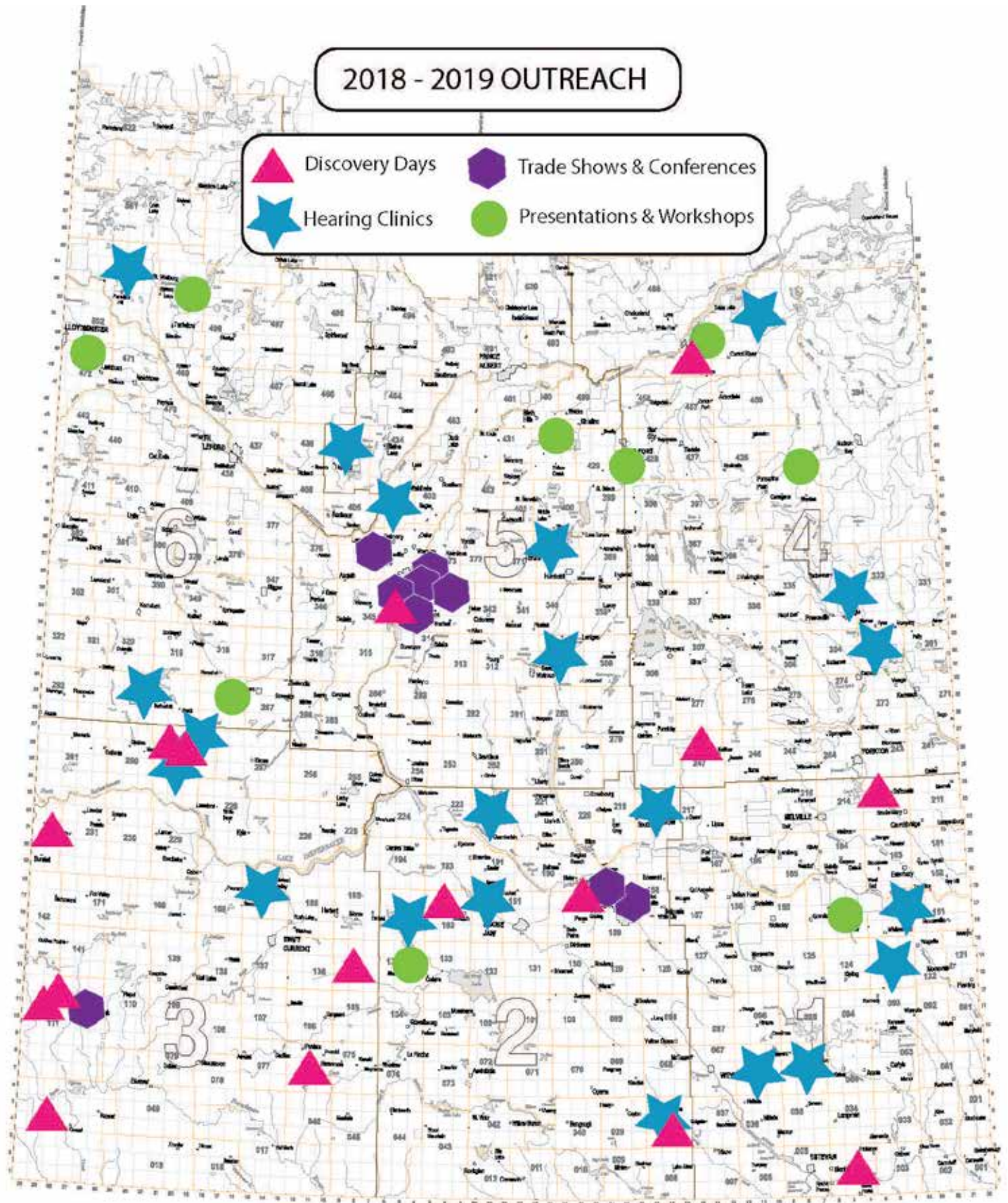
Effectiveness:

At the Annual SARM Convention 2019, Network staff will be speaking with RM representatives at the tradeshow to encourage participation in a Network Program Evaluation survey. The Network is looking forward to the feedback received from our stakeholders to incorporate into the Networks new strategic plan.

A Network Strategic Planning session will be held in 2019 with stakeholders to generate a new general plan to expand and enhance Network activities for the next 3 years. The 4 major areas of: Funding and Partners, Reach and Visibility, Activities and Outputs, and Effectiveness will all be reviewed as further developed.



Reach and Visibility



PRESENTATIONS/WORKSHOPS		
RM #/Town/City	EVENT	DATE
RM # 487 - Nipawin	Farm Stress presentation to women's group	March 1, 2018
RM # 395 - Porcupine Plain	Farm Stress Presentation	March 22, 2018
RM # 154 - Broadview	Farm Stress presentation to women's group	April 10, 2018
RM # 134 - Shamrock	Recruitment and information at the South Central Municipal Gov. Committee Meeting	April 19
RM # 499 - Turtleford	Mental Health for the Workplace	June 7, 2018
RM # 472 - Marshal	Recruitment and information at the West Central Municipal Gov. Committee Meeting	June 28, 2018
RM # 428 - Melfort	Farming and Stress presentation; Steaks and Stems – Producer Appreciation Night, Ministry of Agriculture regional office	November 15
RM # 344 - Saskatoon	Bee Producers Event - Farm Safety Plan Presentation	November 29, 2018
RM # 430 - Crystal Springs	AHSN Promotion	March 6, 2019
RM # 288 - Rosetown	Farm Safety Presentation to Sun West School Division	April 11, 2019

HEALTH & SAFETY CLINICS FOR FARMERS AND RM EMPLOYEES HOSTED IN RURAL COMMUNITIES		
RM #/Town/City	EVENT	DATE
RM #167 of Sask. Landing - Stewart Valley	Hearing Clinic	April 4, 2018
RM #259 of Snipe Lake - Eston	Hearing Clinic	April 5, 2018
RM # 38 of Laurier - Radville	Hearing Clinic	April 10, 2018
RM #370 of Humboldt - Humboldt	Hearing Clinic	April 12, 2018
RM #303 of Keys - Canora	Hearing Clinic	April 16, 2018
RM #123 of Silverwood - Whitewood	Hearing Clinic	April 25, 2018
RM #153 of Willowdale - Whitewood	Hearing Clinic	April 25, 2018
RM #66 of Griffin - Griffin	Hearing Clinic	July 31, 2018
RM #334 of Preeceville - Preeceville	Hearing Clinic	October 4, 2018
RM #259 of Snipe Lake - Eston	Hearing Clinic	October 23, 2018
RM #310 of Usborne - Guernsey	Hearing Clinic	November 6, 2018
RM #486 of Moose Range - Carrot River	Hearing Clinic	November 22, 2018
RM #162 of Caron - Moose Jaw	Hearing Clinic	December 7, 2018
RM #65 of Tecumseh - Stoughton	Hearing Clinic	December 13, 2018
RM #404 of Laird - Walddheim	Hearing Clinic	January 24, 2019
RM #290 of Kindersley - Kindersley	Hearing Clinic	February 4, 2019
RM #218 of Cupar - Cupar	Hearing Clinic	March 18, 2019
RM #222 of Craik - Craik	Hearing Clinic	March 20, 2019
RM #501 of Frenchman Butte - Paradise Hill	Hearing Clinic	March 26, 2019
RM #435 of Redberry - Hafford	Respiratory	March 29, 2019
Clinic trips in Kms = 10,000		

TRADE SHOWS AND CONFERENCES		
RM #/Town/City	EVENT	DATE
RM # 159 - Regina	Farm Progress Show	June 20-22, 2018
RM # 344 - Langham	Ag in Motion	July 17-18, 2018
RM # 344 - Saskatoon	Connect: Heart of the Farm Conference	November 1 & 2, 2018
RM # 344 - Saskatoon	Breaking Barriers: A Journey to Mental Wellness Conference	January 31, 2019
RM # 159 - Regina	Saskatchewan Safety Council Industrial Seminar	February 4-6, 2019
RM # 344 - Saskatoon	Canada Agriculture Day Booths at U of S	February 12, 2019
RM # 111 - Maple Creek	Celebrating Rural Ranching Women	February 28 & March 1, 2019
RM # 344 - Saskatoon	SARM Annual Convention Tradeshow	March 11-13, 2019

Canada Agriculture Day



Canada Agriculture Day is a day to recognize and celebrate Canadian Agriculture by engaging in positive dialogue about agriculture and food production. On February 12, 2019 the Network celebrated this day at the University of Saskatchewan with tradeshow booths present in the Health Sciences Building and the College for Agriculture.



THE POWER OF A BEQUEST:

Supporting the Human Side of Agriculture and Rural life

When Ms. Helen Elkow left her Estate to the Canadian Centre for Health and Safety in Agriculture she was not only thinking about the next generation of researchers who would benefit from her bequeath but also the those who make agriculture their livelihood. She was thinking about agriculture as a way of life and the future of the Saskatchewan people!

Her legacy will enhance the depth of existing research by developing new skills in Postdoctoral, Doctoral and Masters students in the areas of occupational medicine, occupational nursing, industrial hygiene, human toxicology, ergonomics and injury epidemiology. It will also help to identify issues through research; to structure Canada-wide preventive programs; and to provide occupational health services researching methodologies.

The Elkow family, Helen, Peter and Philip, legacy will live forever!

The Centre's mission is to conduct and stimulate research, education, and health promotion programs aimed at enhancing the health and well-being of agricultural, rural and remote populations.

Canadian Centre for Health & Safety in Agriculture - CCHSA

CCHSA was founded in 1986 and is located at the University of Saskatchewan. The Network was formed 2 years later. Research guides the Network's focus on various agricultural health and safety concerns. CCHSA's researchers and extensive network of international researchers and collaborators investigate a broad range of topics that can potentially impact the health and safety of Saskatchewan farm families.

Some of the research projects at CCHSA include:

- Saskatchewan Injury Cohort - examining the types of injuries and fatalities that are occurring in populations of Saskatchewan farmers
- Saskatchewan Rural Health Study - respiratory health
- Low back disorder-related pain and disability experienced by Saskatchewan farmers
- Rural Dementia Research and Remote Memory Clinic
- Saskatchewan First Nations Lung Health Study
- Asthma diagnosis in Saskatchewan children
- Occupational Hygiene and Health

The Agricultural Health and Safety Network

HISTORY



1988: 5 RMs

The Canadian Centre for Health and Safety in Agriculture (CCHSA) partnered with the Saskatchewan Association of Rural Municipalities (SARM) and six Rural Municipalities in 1988 and founded the Agricultural Health and Safety Network with the mission to improve health and safety on the farm through education, service, and evaluation research. This organization is now in its 30th successful year in providing occupational health and safety services to 213 RMs that are members of the Network, with a mailing list of approximately 27,000 farm families. The Network represents an agricultural health and safety program that is unique to Saskatchewan and Canada.

Membership, Partnership & Recruitment

The current membership of the Agricultural Health and Safety Network is 213 RMs. Each of these RMs pay an annual fee of \$4.60 per active farm family to benefit from the Network resources and services. The RM membership fee is currently capped at \$1200 per RM. The partnership that member RMs provide is truly the foundation of the Network and helps to attract additional resources to better serve Saskatchewan farmers, their families and their workers.

In an effort to increase Network RM membership an annual recruitment package is mailed to non-member RMs. Visits were also made to RM Council meetings to encourage and promote Network membership.

The Network is funded through RM fees, the Saskatchewan Ministry of Agriculture, the Canadian Center for Health and Safety in Agriculture and other grants for specific projects. This support helps us continue a unique program that can benefit collectively all farm families and agricultural workers in Saskatchewan.

Network Team

The Network team is comprised of CCHSA faculty and staff. Some members of the Network team spend all of their time on Network activities while other members are part-time. Each member of the Network team brings expertise and experience from their respective disciplines and backgrounds.

The AHSN employs four core staff: two registered nurses (0.7 and 0.6 FTE), a Knowledge Translation Specialist, and a half-time Clerical Assistant. In addition, a 0.25 Communications Coordinator is employed, along with two CCHSA Faculty leads that help direct and coordinate Network activities and plans (one of which is the CCHSA Director). Periodically, senior nursing students also join the Network for three-month blocks a part of a practicum. The Faculty co-leads are not paid by the Network.



Niels Koehncke, Director, on Sabbatical, CCHSA (1)
Dr. Donna Rennie, Professor, Col. of Nursing, Network CCHSA Faculty Advisor (2)
Shelley Kirychuk, Acting Director, CCHSA (3)
Kendra Ulmer, Registered Nurse (4)
Kathryn Marciniak, Registered Nurse (5)
Sueli de Freitas, Communications Coordinator (6)
Iris Rugg, Network Finances (7)
Shelly Sander, Network Administrative Assistant (8)
Tess Kelly, Knowledge Translation Specialist (9)



Bonita Hus, a Knowledge Translation Specialist left the Network team in December 2018 to pursue other career goals. Bonita had been with the Network for many years and was a great asset to the Network programmes. We wish her all the best!

Steering Committee

The Steering Committee is an advisory group comprised of 6 RM councilors and a Saskatchewan Ministry of Agriculture representative. These committee members represent the voices of Saskatchewan farmers, their families and their workers and the Ministry of Agriculture to provide direction/feedback on programs delivered in the Network. Their support and input are invaluable to the Network.

Division #1:	Ken Aldous, Reeve, RM of Willowdale No. 153
Division #2:	TBA
Division #3:	TBA
Division #4:	Brenda Zemluck, Councillor, RM of Elfros No. 307
Division #5:	Walter Kabaroff, Councillor, RM of Blaine Lake No. 434
Division #6:	Bonnie Mills-Midgley, Reeve, RM of Frenchman Butte No. 501
Ministry of Agriculture	Angela Hall

SARM Scholarship

In 1995, the Saskatchewan Association of Rural Municipalities (SARM) actioned off the first copy of its history book "The Building of a Province: Commemorating the 90th Anniversary of the Saskatchewan Association of Rural Municipalities." This auction netted the sum of \$2,600 which the SARM Board of Directors contributed to the Canadian Centre for Health and Safety in Agriculture (CCHSA). These funds initiated the SARM 90th Anniversary \$1,000 Student Scholarship in Agricultural Safety and Rural Health. The Founding Chairs Program at CCHSA now maintains the scholarship.

This year two scholarships of \$1,500 each were awarded to grade 12 students, **Collete Kernaleguen**, from St Briex, RM #399 of Lake Lenore, and **Dallyn Bast**, from Macklin, RM # 382 of Eye Hill. Students were asked to submit essays about (a) *The importance of safety and health on our farm* or (b) *Safety and health hazards on our farm*.



Dallyn Bast
Eye Hill, RM #382

"On our farm, so many different situations can cause health issues, injury, and possibly death. Safety procedures should be followed as much as humanly possible. The farm is a dangerous place and putting safety first can be the ultimate life saver."



Collete Kernaleguen
Lake Lenore, RM #399

"By taking precautions and using simple techniques to teach safety everyone avoids injury and/or accidents from happening. Things like teaching kids to move to the side of the road if they hear or see machinery coming, making sure the equipment is maintained to keep the operator and everyone around safe and being aware of your surroundings. Practicing prevention is the easiest and best way to avoid injury or accidents."



Each year we celebrate years of commitment to agricultural health and safety by RMs. This year the following RMs are being recognized.

THANK YOU for your support!

AWARDS

ONE YEAR

RM of Maple Creek No. 111
RM of Milden No. 286

RM of Lakeside No. 338
RM of Hoodoo No. 401
RM of Nipawin No. 487
RM of Parkdale No. 498
RM of Mervin No. 499

FIVE YEARS

Rm of Laurier No. 38
RM of Hillsborough No. 132
RM of Wheatland No. 163
RM of Rodgers No. 133
RM of Willowdale No. 153

TWENTY YEARS

RM of Hart Butte No. 11
RM of Griffin No. 66
RM of Elmsthorpe No. 100
RM of Wilton No. 472

TEN YEARS

RM of Weyburn No. 67
RM of Lake of the Rivers No. 72
RM of Grassy Creek No. 78
RM of Caledonia No. 99
RM of Terrell No. 101
RM of Silverwood No. 123
RM of Francis No. 127
RM of Caron No. 162
RM of Miry Creek No. 229
RM of Paynton No. 470

TWENTY FIVE YEARS

RM of Storthoaks No. 31
RM of Willow Bunch No. 42
RM of Wolseley No. 155
RM of Stanley No. 215
RM of Lost River No. 313
RM of Perdue No. 346
RM of Humboldt No. 370

FIFTEEN YEARS

RM of Lake Alma No. 8
RM of Cymri No. 36
RM of Auvergne No. 76
RM of Wawken No. 93
RM of Carmichael No. 109
RM of Kingsley No. 124
RM of Webb No. 138
RM of North Qu'Appelle No. 187
RM of Enfield No. 194
RM of Good Lake No. 274

THIRTY YEARS

RM of Lumsden No. 189
RM of St. Peter No. 369
RM of Fish Creek No. 402
RM of Round Valley No. 410

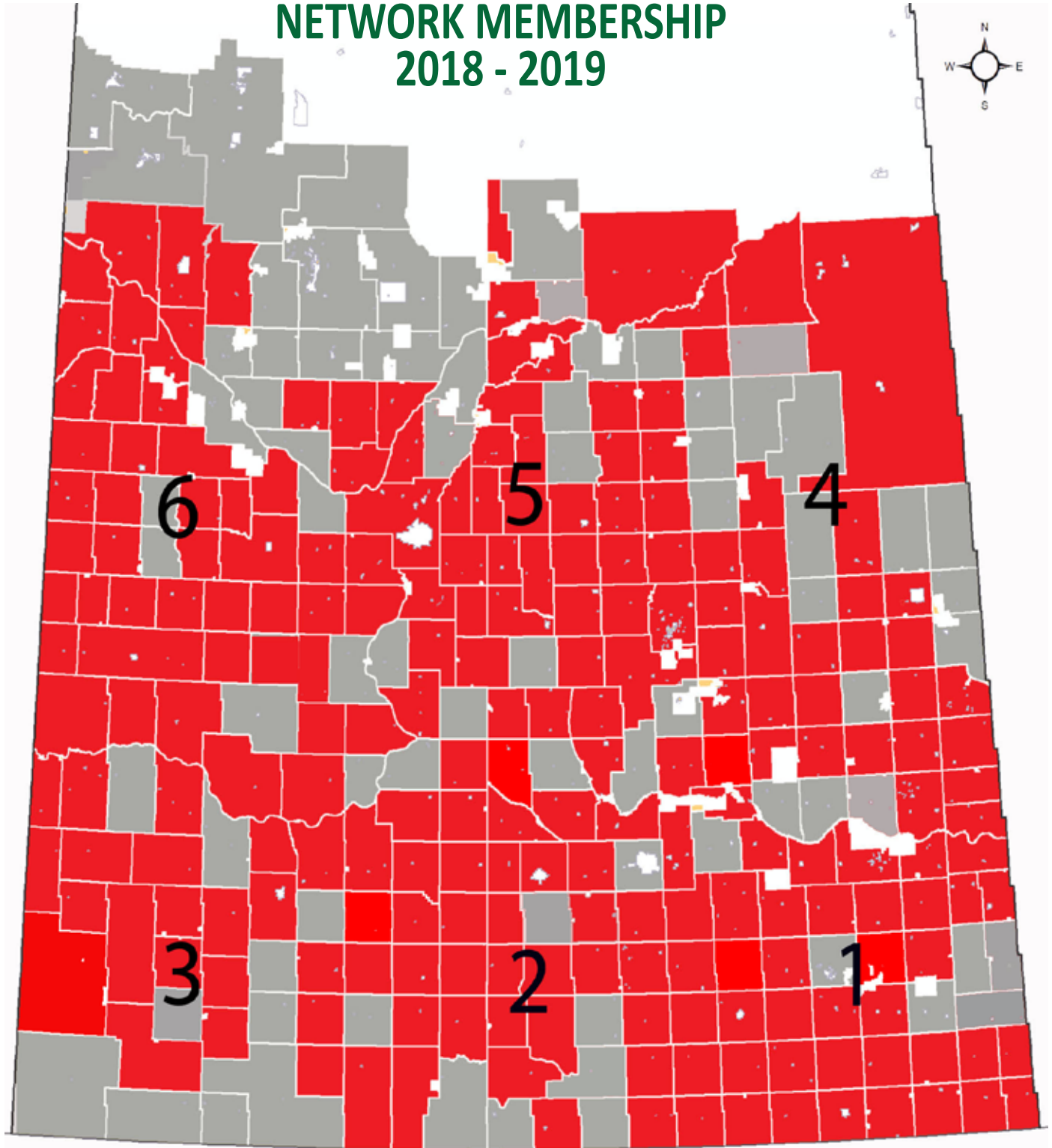
NETWORK MEMBERS



R.M. of Argyle No. 1	R.M. of Lajord No. 128	R.M. of Big Arm No. 251	R.M. of St. Peter No. 369
R.M. of Mount Pleasant No. 2	R.M. of Bratt's Lake No. 129	R.M. of Arm River No. 252	R.M. of Humboldt No. 370
R.M. of Enniskillen No. 3	R.M. of Redburn No. 130	R.M. of Loreburn No. 254	R.M. of Bayne No. 371
R.M. of Coalfields No. 4	R.M. of Hillsborough No. 132	R.M. of Coteau No. 255	R.M. of Grant No. 372
R.M. of Estevan No. 5	R.M. of Rodgers No. 133	R.M. of King George No. 256	R.M. of Aberdeen No. 373
R.M. of Cambria No. 6	R.M. of Shamrock No. 134	R.M. of Snipe Lake No. 259	R.M. of Glenside No. 377
R.M. of Souris Valley No. 7	R.M. of Swift Current No. 137	R.M. of Newcombe No. 260	R.M. of Rosemount No. 378
R.M. of Lake Alma No. 8	R.M. of Webb No. 138	R.M. of Chesterfield No. 261	R.M. of Reford No. 379
R.M. of Surprise Valley No. 9	R.M. of Gull Lake No. 139	R.M. of Sliding Hills No. 273	R.M. of Grass Lake No. 381
R.M. of Hart Butte No. 11	R.M. of Enterprise No. 142	R.M. of Good Lake No. 274	R.M. of Eye Hill No. 382
R.M. of Storthoaks No. 31	R.M. of Rocanville No. 151	R.M. of Insinger No. 275	R.M. of Hudson Bay No. 394
R.M. of Reciprocity No. 32	R.M. of Spy Hill No. 152	R.M. of Foam Lake No. 276	R.M. of Pleasantdale No. 398
R.M. of Moose Creek No. 33	R.M. of Willowdale No. 153	R.M. of Emerald No. 277	R.M. of Lake Lenore No. 399
R.M. of Browning No. 34	R.M. of Elcapo No. 154	R.M. of Mount Hope No. 279	R.M. of Hoodoo No. 401
R.M. of Benson No. 35	R.M. of Wolseley No. 155	R.M. of Wreford No. 280	R.M. of Fish Creek No. 402
R.M. of Cymri No. 36	R.M. of Indian Head No. 156	R.M. of McCrancy No. 282	R.M. of Laird No. 404
R.M. of Lomond No. 37	R.M. of Edenwold No. 158	R.M. of Rosedale No. 283	R.M. of Great Bend No. 405
R.M. of Laurier No. 38	R.M. of Pense No. 160	R.M. of Milden No. 286	R.M. of Round Valley No. 410
R.M. of The Gap No. 39	R.M. of Moose Jaw No. 161	R.M. of St. Andrews No. 287	R.M. of Senlac No. 411
R.M. of Willow Bunch No. 42	R.M. of Caron No. 162	R.M. of Pleasant Valley No. 288	R.M. of Flett's Springs No. 429
R.M. of Waverley No. 44	R.M. of Wheatland No. 163	R.M. of Kindersley No. 290	R.M. of Blaine Lake No. 434
R.M. of Mankota No. 45	R.M. of Chaplin No. 164	R.M. of Milton No. 292	R.M. of Redberry No. 435
R.M. of Glen McPherson No. 46	R.M. of Morse No. 165	R.M. of Keys No. 303	R.M. of Douglas No. 436
R.M. of White Valley No. 49	R.M. of Excelsior No. 166	R.M. of Buchanan No. 304	R.M. of Cut Knife No. 439
R.M. of Reno No. 51	R.M. of Sasklanding No. 167	R.M. of Elfros No. 307	R.M. of Hillsdale No. 440
R.M. of Brock No. 64	R.M. of Pittville No. 169	R.M. of Big Quill No. 308	R.M. of Manitou Lake No. 442
R.M. of Tecumseh No. 65	R.M. of Fox Valley No. 171	R.M. of Prairie Rose No. 309	R.M. of Connaught No. 457
R.M. of Griffin No. 66	R.M. of Langenburg No. 181	R.M. of Usherna No. 310	R.M. of Birch Hills No. 460
R.M. of Weyburn No. 67	R.M. of Fertile Belt No. 183	R.M. of Morris No. 312	R.M. of Prince Albert No. 461
R.M. of Brokenshell No. 68	R.M. of North Orléanne No. 187	R.M. of Lost River No. 313	R.M. of Turtle River No. 469
R.M. of Excel No. 71	R.M. of Lumsden No. 189	R.M. of Dundurn No. 314	R.M. of Paynton No. 470
R.M. of Lake of the Rivers No. 72	R.M. of Dufferin No. 190	R.M. of Montrose No. 315	R.M. of Eldon No. 471
R.M. of Stonehenge No. 73	R.M. of Marquis No. 191	R.M. of Harris No. 316	R.M. of Wilton No. 472
R.M. of Wood River No. 74	R.M. of Eyebrow No. 192	R.M. of Marriott No. 317	R.M. of Moose Range No. 486
R.M. of Auvergne No. 76	R.M. of Enfield No. 194	R.M. of Mountain View No. 318	R.M. of Nipawin No. 487
R.M. of Grassy Creek No. 78	R.M. of Churchbridge No. 211	R.M. of Winslow No. 319	R.M. of Torch River No. 488
R.M. of Wawken No. 93	R.M. of Saltcoats No. 213	R.M. of Oakdale No. 320	R.M. of Buckland No. 491
R.M. of Fillmore No. 96	R.M. of Cana No. 214	R.M. of Prairiedale No. 321	R.M. of Parkdale No. 498
R.M. of Scott No. 98	R.M. of Stanley No. 215	R.M. of Antelope Park No. 322	R.M. of Mervin No. 499
R.M. of Caledonia No. 99	R.M. of Tullymet No. 216	R.M. of Preeceville No. 334	R.M. of Frenchman Butte No. 501
R.M. of Elmsthorpe No. 100	R.M. of Lipton No. 217	R.M. of Sasman No. 336	R.M. of Britannia No. 502
R.M. of Terrell No. 101	R.M. of Cupar No. 218	R.M. of Lakeview No. 337	R.M. of District of the Lakelands 521
R.M. of Lake Johnston No. 102	R.M. of McKillop No. 220	R.M. of Lakeside No. 338	
R.M. of Sutton No. 103	R.M. of Sarnia No. 221	R.M. of LeRoy No. 339	
R.M. of Glen Bain No. 105	R.M. of Craik No. 222	R.M. of Wolverine No. 340	
R.M. of Whiska Creek No. 106	R.M. of Huron No. 223	R.M. of Viscount No. 341	
R.M. of Bone Creek No. 108	R.M. of Victory No. 226	R.M. of Colonsay No. 342	
R.M. of Carmichael No. 109	R.M. of Lacadena No. 228	R.M. of Blucher No. 343	
R.M. of Piapot No. 110	R.M. of Miry Creek No. 229	R.M. of Corman Park No. 344	
R.M. of Maple Creek No. 111	R.M. of Happyland No. 231	R.M. of Vanscoy No. 345	
R.M. of Moosomin No. 121	R.M. of Deer Forks No. 232	R.M. of Perdue No. 346	
R.M. of Martin No. 122	R.M. of Calder No. 241	R.M. of Biggar No. 347	
R.M. of Silverwood No. 123	R.M. of Wallace No. 243	R.M. of Grandview No. 349	
R.M. of Kingsley No. 124	R.M. of Garry No. 245	R.M. of Progress No. 351	
R.M. of Chester No. 125	R.M. of Ituna Bon Accord No. 246	R.M. of Heart's Hill No. 352	
R.M. of Montmartre No. 126	R.M. of Kellross No. 247	R.M. of Kelvington No. 366	
R.M. of Francis No. 127	R.M. of Last Mountain Valley No. 250	R.M. of Spalding No. 368	



NETWORK MEMBERSHIP 2018 - 2019





UNIVERSITY OF SASKATCHEWAN

Canadian Centre for Health
and Safety in Agriculture

CCHSA-CCSSMA.USASK.CA



The Agricultural Health and Safety Network
104 Clinic Place, Box 23, UofS, Saskatoon, SK S7N 2Z4



Phone: 306- 966-6644 or 306-966-6647
Fax: 306- 966-8799

by: Bizetto