



April 2016 Newsletter

RaDAR in Sun Country Health Region Update

RaDAR continues to work with the Kipling PHC team to adapt and evaluate best practices in dementia care (e.g., standard tools and protocols, multidisciplinary team care, education/support from specialists and others).



Kipling PHC Team and RaDAR



PC-DATA session with Kipling PHC Team

In terms of standard tools and protocols, test versions of visit flow sheets for patients with possible dementia have been added to the EMR system.

These visit flow sheets are based on **PC-DATA (Primary Care Dementia Assessment and Treatment Algorithm)**, and were developed by **Dr. Dallas Seitz** (Queen's University). A Work Standard to guide case conferences with patients and families has also been developed by the Kipling team. The Kipling team will test these tools over the coming months.

Education sessions relevant to issues of dementia care are currently being planned (e.g., differential diagnosis, reporting to SGI).

For more information about the RaDAR project or PC-DATA, contact debra.morgan@usask.ca or call Dr. Morgan at 306-966-7905.

"Study on the issue of dementia in our society" Senate Standing Committee on Social Affairs, Science, and Technology

A **Senate Standing Committee** recently began a study to identify gaps in programs and services for Canadians with dementia and their families, and the role of the federal government in closing these gaps.

Dr. Andrew Kirk (MD, FRCPC), U of S Professor and Head of Neurology, will present on rural and remote issues in dementia care to the Standing Senate Committee on April 20.



Dr. Andrew Kirk
U of S Neurologist

Video and transcripts of past committee meetings on the *issue of dementia in our society* are available online at www.parl.gc.ca. A final report is expected January, 2017.



Visit the website of the Canadian Consortium on Neurodegeneration in Aging to see a profile of the Rural

and Remote Memory Clinic and **RaDAR's collaboration with Sun Country Health Region.**

HQC and RaDAR examine health service use associated with dementia

As part of our ongoing partnership with Health Quality Council, we are using administrative data to examine use of health services 5 years before and after first identification of dementia. HQC researchers Beliz Acan Osman and Meric Osman are conducting the analyses at HQC. Previous RaDAR-HQC reports can be found [here](#).



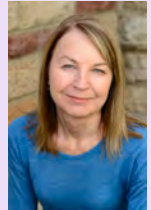
Beliz Acan Osman, MA
HQC



Meric Osman, MA
HQC



Dr. Debra Morgan, Chair of Rural Health Delivery (U of S) leads the RaDAR team, which is focused on improving care for individuals with dementia and their families in rural and remote areas.



Dr. Debra Morgan

The RaDAR team is currently partnering with the Sun Country Health Region to introduce new strategies for dementia care in primary health care teams.

Save the date for the 9th Annual Summit of the Knowledge Network in Rural and Remote Dementia Care



Oct. 25
Wine & cheese poster session (7-9 pm)

Oct. 26
Conference

Venue: Western Development Museum, Saskatoon

There is no charge to register and attend. There is finite funding available for some Summit attendees who have no other available travel supports. Contact debra.morgan@usask.ca for more details.

Spotlight on Leslie Malloy-Weir

Leslie recently completed her PhD in Health Policy at McMaster University, and has joined the RaDAR team as a Postdoctoral Fellow. One of Leslie's current projects involves an evaluation of the outreach component of the Alzheimer of Saskatchewan's First Link Program.



What's on our RaDAR?

Five Bed Dementia Assessment Unit at Regina's Wascana Rehabilitation Centre

"Patients can be referred from home, long-term care or an acute or alternate level of care setting, through their care provider to the resource team who will do an in-depth assessment." [Read more.](#)

Bill C-233

"In a notable display of welcome bi-partisanship, the national dementia strategy is being sought through a private member's bill introduced by Niagara Falls Conservative MP Rob Nicholson..." [Read more](#) or read [Bill C-233](#).

I-CAARE Indigenous Cognition & Aging Awareness Research Exchange

"In January, the web welcomed a new resource for Indigenous cognition and aging awareness. Led by Kristen (Jacklin), the Indigenous Cognition and Aging Awareness Research Exchange (I-CAARE) is a hub for Team 20's projects, as well as other research and resources concerning Indigenous cognition and aging." [Website: http://www.i-caare.ca](http://www.i-caare.ca)

Lancet Neurology Commission

"The Lancet Neurology Commission (has identified) key steps that need to be taken to improve patient care and support the research that is urgently needed to develop safe and effective strategies for treatment and prevention." [Read more.](#)

Alzheimer Society of Saskatchewan

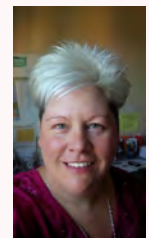
First Link®

First Link is an early intervention service designed to connect individuals and families affected by Alzheimer's disease or another dementia with services and support as soon as possible after diagnosis.

If you are a health care professional, please see our [First Link](#) information and download the [First Link Agency Referral Form](#).

Karrie McFadden, First Link Coordinator

Sun Country Resource Centre
kmcfadden@alzheimer.sk.ca
1-306-842-2273
1-800-263-3367



Dementia Helpline: 1-877-949-4141
<http://www.alzheimer.ca/sk>



This newsletter is prepared by Dr. Julie Kosteniuk and Dr. Debra Morgan at the *Canadian Centre for Health and Safety in Agriculture*, University of Saskatchewan. Please direct inquiries to julie.kosteniuk@usask.ca (306-966-8773) or debra.morgan@usask.ca (306-966-7905)