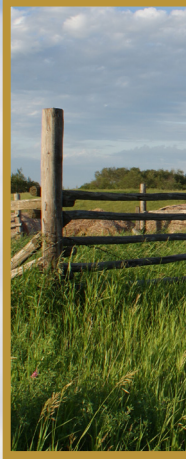




CCHSA / CCSSMA



2014 - 2015 ANNUAL REPORT

OUR MISSION

TO CONDUCT AND STIMULATE RESEARCH, EDUCATION AND HEALTH PROMOTION PROGRAMS AIMED AT ENHANCING THE HEALTH AND WELL-BEING OF AGRICULTURAL, RURAL AND REMOTE POPULATIONS.

OUR VISION

**WORLD LEADERSHIP IN
HEALTH OF RURAL PEOPLE.**

MESSAGE FROM THE DIRECTOR



Another year has flown by. We have settled into our E wing home and most of our national lab facilities, collectively titled the National Agricultural Industrial Hygiene Laboratory, are up and running. CCHSA grants and funding including our infrastructure dollars still being spent remains around 12 million.

Our outreach and extension activities are increasing with 217 RMs as members of our Agricultural Health and Safety Network, and the Network is well on its way towards achieving goals laid out in its Strategic Plan. We remain in communication with the Ministry of Agriculture on Network activities and are grateful that the Ministry continues to support this important and unique aspect of CCHSA.

CCHSA is participating in large new initiatives including the CIHR Foundations Grant application scheme. We have been contracted to provide the knowledge translation work for the Applied Agrisafety Research Program through Agrivita Canada Inc, a national not-for-profit corporation promotion health and safety research and its effective application to the agricultural sector.

CCHSA, also, proudly hosted its 7th International Symposium Safety & Health in Agricultural & Rural Populations: Global Perspectives, October 19 – 22, 2014. This was a very successful event with approximately 300 submitted abstracts and 301 attendees from 20 different countries! We were also proud to host, at the same time, the scientific meetings of the Canadian Association for Research on Work and Health and the Canadian Rural Health Research Society. I am tremendously proud of and grateful to our entire team of staff, faculty and students that came together and helped pull off another successful international event. We look forward to a dedicated edition of the Journal of Agromedicine being published with scientific papers from the Symposium.

Looking ahead, 2016 will mark the 30th anniversary of the Centre – amazing! We have started early conversations and planning for a celebration – stay tuned!

Wishing you a productive and safe year,

Sincerely,

A handwritten signature in blue ink, appearing to read 'N. Koehncke'. The signature is fluid and cursive, with a large initial 'N' and 'K'.

Niels Koehncke, MD, MSc, FRCPC
Director, Canadian Centre for Health & Safety in Agriculture

RURAL AND REMOTE DEMENTIA CARE



CCHSA Professor and Chair in Rural Health Delivery, Dr. Debra Morgan, has been heading the interdisciplinary Rural Dementia Action Research (RaDAR) team since 2003. The team's goal is to improve dementia care in rural and remote settings. Team members include Debra Morgan (PI), and co-investigators Margaret Crossley, Andrew Kirk, Julie Kosteniuk, Haizhen Mou, Megan O'Connell, and Norma Stewart (University of Saskatchewan); Joanne Bracken (Alzheimer Society of Saskatchewan CEO); Vanina Dal Bello-Haas (McMaster University); Dorothy Forbes (University of Alberta); Anthea Innes (Bournemouth University, England); and Edna Parrot (family caregiver).

Dr. Morgan is the editor of the RaDAR team website www.cchsa-ccssma.usask.ca/ruraldementiacare which recently underwent a site-wide update. The website includes information about RaDAR team members and projects. She is a co-founder of Gateway to Rural International Initiatives in Dementia (GRIID) www.ruraldementia.com, a website that highlights international initiatives and research in rural dementia care.

RESEARCH ROOTED IN PARTNERSHIP WITH COMMUNITY

The RaDAR research team relies on input and guidance from a Decision-Maker Advisory Council, consisting of front-line health care providers and managers, family members of people with dementia, health region representatives, international researchers, and governmental and community based organizations. The iterative process in place between the RaDAR research team and the Advisory Council helps in all aspects of development and implementation of team



projects, and ensures that research knowledge is relevant, shared, and put into practice.

Annually, RaDAR researchers, the Decision-Maker Advisory Council, students, and others interested in rural dementia care meet for a two-day knowledge exchange Summit. This year, the 7th Annual Summit of the Knowledge Network in Rural and Remote Dementia Care was held in Saskatoon on October 21st and 22nd in conjunction with the CCHSA-Hosted 7th International Symposium: Safety and Health in Agricultural and Rural Populations (SHARP)

This year's Summit and SHARP conference included keynote presenter, Dr. Anthea Innes, from Bournemouth University Dementia Institute, Bournemouth, United Kingdom. Dr. Innes was the keynote presenter at the 2nd Summit in 2009 and it was great to welcome her back to Saskatoon. We were also delighted to welcome research colleagues, including CCNA Team 20 co-lead, Dr. Kristen Jacklin, to Saskatoon. Summit participants this year included many of the Alzheimer Society of Saskatchewan's First Link Coordinators from the six health regions across the province that currently have coordinators. More information about the Summit, including a set of photos from the event, can be found on the team's website under the Summit tab: www.cchsa-ccssma.usask.ca/ruraldementiacare



RaDAR TEAM MEMBER ACTIVITIES

RURAL AND REMOTE MEMORY CLINIC

The flag-ship project of the RaDAR team is the family-centred Rural and Remote Memory Clinic (RRMC) which is located in suite 1300 in the Health Sciences E-wing building. The clinic focus is diagnosis and management of atypical and complex cases of suspected dementia, where an interdisciplinary team assessment is most needed. The clinic streamlines processes to reduce repeated patient travel and to shorten the time to diagnosis by coordinating a team assessment on one day. The Saskatchewan TeleHealth network is then used for follow-up appointments. The RRMC was operated as a research project for the first five years, and now receives on-going funding from the Saskatchewan Ministry of Health. To date over 500 patients have been seen in the clinic, along with their family members. The clinic facility is shared with other researchers and is also used to host a monthly Huntington's Disease clinic. RRMC team members include: Leslie Holfeld (nurse);

RESEARCH

Allison Cammer (dietitian); Duane Minish (psychometrist); Katherine Stevenson and Rhonda Loeppky (physical therapists); Chandima Karunanayake (data analyst); Nadia Smith (data entry manager).

CANADIAN CONSORTIUM ON NEURODEGENERATION IN AGING (CCNA)

The Canadian Consortium on Neurodegeneration in Aging (CCNA) was established by the Canadian Institutes of Health Research in April 2014 to address the growing prevalence of neurodegenerative diseases affecting cognition, such as Alzheimer Disease and other dementias. CCNA Team 20 brings together 23 researchers and decision-makers from three provinces and the UK to focus on Issues in Dementia Care in Rural and Indigenous Populations. The Team 20 Rural research stream includes RaDAR team members and is led by Debra Morgan (CCHSA). The Team 20 Indigenous research stream is co-led by Kristen Jacklin (Laurentian University) and Carrie Bourassa (First Nations University of Canada).

The CCNA Rural research stream focuses on developing and evaluating effective and sustainable models of primary health care for dementia by identifying current gaps in rural dementia care and priorities for intervention, and then working with primary health care teams to adapt best practices in dementia care to the local setting to address identified gaps. Pilot projects will investigate the clinical support tools (eg, assessment instruments, care pathways) needed by rural primary health care providers and will explore strategies for specialist-to-rural primary health care provider skills training and decision support. Progress to date: Phase 1 baseline data collection began in January 2015 and is currently in progress to identify current care pathways of individuals with dementia and their families. Data is being collected by interviews with members of three groups: regional decision-makers, 4 members from each of the 8 primary health care (PHC) teams in Sun Country Health Region (family physician, nurse practitioner, occupational therapist, home care nurse), and 2 patient-caregiver dyads from each of the 8 PHC teams. Phase 2, an intervention study, will begin summer 2015 and will involve adaptation of an Ontario-based model of dementia care to PHC teams in Sun Country.

SUN COUNTRY DEMENTIA WORKING GROUP

In 2013, Sun Country Health Region established a 12-month initiative to improve the dementia knowledge base of health care providers and families. The regional Director of Home Care formed a working group to support the initiative, and invited the RaDAR team (Morgan, Kosteniuk) to join to provide dementia care and research expertise. The 12-month initiative ended in April, 2014, but the working group has carried on and now performs the dual function of the Sun Country Dementia Working Group and the CCNA Team 20 Regional Advisory Committee. Led by the Regional Director of Population Health Promotion, the group includes Sun Country leadership

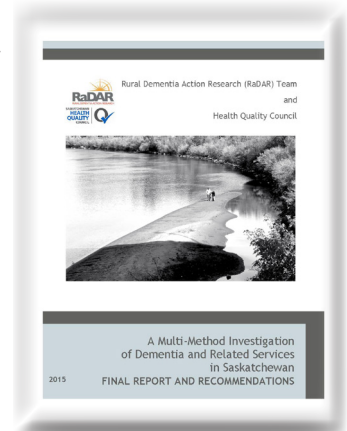


Alzheimer Society of Saskatchewan's First Link Coordinators from the six health regions across the province that currently have coordinators.

from the sectors of home care, PHC, long-term care, social work, and chronic disease management, as well as the Alzheimer Society of Saskatchewan. Progress to date: This partnership has resulted in a technical report, 3 conference presentations/posters, and 3 peer-reviewed manuscripts (1 published and 2 in review).

RESEARCH IN PARTNERSHIP WITH SASKATCHEWAN HEALTH QUALITY COUNCIL

RaDAR and the Saskatchewan Health Quality Council are collaborating to address the dearth of current epidemiological data regarding dementia in Saskatchewan. This collaboration is guided by a Steering Committee whose members include leadership from the Alzheimer Society of Saskatchewan, family physicians, nurse practitioners, Home Care client care coordinators, and RaDAR team members. Representatives from the SK Ministry of Health serve as consultants to the Steering Committee. Progress to date: The RaDAR-HQC partnership began in 2012. Phase 1, a multi-method investigation of dementia and related services in SK, has been completed. Phase 2, use of administrative health data to identify care patterns among individuals with dementia in SK, is being planned. To date, the team has produced 1 technical report, 3 conference presentations/posters, and 3 peer-reviewed manuscripts based on our progress to date. We have also given 9 invited lectures and provided radio and print interviews to translate our findings to the public. The technical report from this project (which includes summaries for each health region in the province) has been released, and is available on the RaDAR team website: www.cchsa-ccsma.usask.ca/ruraldementiacare



RESEARCH

AGE-WELL (*Aging Gracefully across Environments using Technology to Support Wellness, Engagement, and Long Life*) Project: RRITE

As part of the national AGE-WELL NCE, RaDAR team member Megan O'Connell is the Project Lead for Rural/Remote Indigenous Technology needs Exploration (RRITE).

Understanding user needs is fundamental to the development of technology that individuals will try and continue to use. The user needs of older adults who reside in rural or remote areas and Indigenous older adults will be explored in an attempt to increase accessibility of the technologies developed in AGE-WELL. The RRITE project will explore issues related to internet access that are experienced by rural/remote and Indigenous older adults. The project will also explore characteristics of rural/remote older adults that impact their needs for technology, such as their exposure to technology, attitudes toward technology, and cognitive abilities. In addition, it will explore what rural/remote and Indigenous older adults find to be personally relevant goals for technology to support them while they age. Finally, RRITE will explore how residing in rural/remote locations has unique implications for training to use new technology and how technologies developed in AGE-WELL can be adapted to increase cultural relevance for Indigenous older adults.

There are a number of students associated with the RaDAR team, these include:

- Joseph Enright, PhD Candidate, Psychology, thesis: Reminiscence for Caregivers of Persons with Dementia: A Model of Burden and Telehealth Service Delivery Consideration.
- Rachel Burton: PhD Candidate, Psychology, thesis: Delivering cognitive rehabilitation by telehealth videoconferencing to individuals with dementia in rural areas.
- Allison Cammer, PhD Student, Nutrition, thesis: Nutritional care best practices for urban and rural long-term care residents with dementia.
- Tracey Danylyshen-Laycock. PhD Candidate, Health Sciences, thesis: Examining the relationship between facilitation and sustainability of a dementia care training program in rural long-term care homes.
- Kathleen Kulyk, Masters student, Nursing, thesis: Evaluating the construction and validity of a questionnaire assessing healthcare providers perceptions of rural dementia care pathways.
- Ben Gould, Masters student, Psychology. Ben has just joined the team, and is exploring user needs for technology to support aging well in a First Nations community.

THE SASKATCHEWAN FARM INJURY PROJECT (SFIP) PHASE 2

PURPOSE AND OBJECTIVES

The purpose of SFIP-Phase 2 is to extend and expand study of the cohort assembled in SFIP Phase 1 in the context of the Population Health Framework (CIHR). The new features of Phase 2 will be:

1. to develop a cohort of farming and non-farming rural children and youth and
2. for the first time we will examine musculoskeletal injuries in a population of Canadian farmers.

THE RESEARCH TEAM

The research team comprises members from Saskatchewan, Ontario, Alberta, the United States and Australia. Dr. Will Pickett (Queen's University) and Dr. Jim Dosman (University of Saskatchewan) will lead the research team. Co-investigators include Dr. Josh Lawson (University of Saskatchewan), Dr. Barbara Marlena (National Farm Medicine Center), Dr. Robert Brison (Queen's University), Dr. Lesley Day (Monash University), Dr. Don Voaklander (University of Alberta), Dr. Catherine Trask (University of Saskatchewan), Dr. Niels Koehncke (University of Saskatchewan) and Ms Louise Hagel (University of Saskatchewan). Ms. Valerie Elliot is the project research assistant.

TRAINEES

Our three graduate students, Ms. Yvonne Dewit, Ms. Michelle McMillan and Mr. Samuel Essein have successfully completed their Master of Science programs. Congratulations to them all.

PROGRESS TO DATE:

Baseline studies were completed in 2014. The follow-up study for the farm family cohort and the children's cohort are currently underway.

OUR WEBSITE

For a complete description of the study and the results to date please visit our website at: <http://cchsa-ccsma.usask.ca/skfarminjuryproject/>

This project is funded by the Canadian Institutes for Health Research (CIHR).

CONTACT US:

Enquiries may be sent to louise.hagel@usask.ca.

THE SASKATCHEWAN RURAL HEALTH STUDY (SRHS)

PURPOSE AND OBJECTIVES

SRHS is a large observational prospective study of respiratory health in rural dwellers in Saskatchewan. The goal of the SRHS is to develop a better understanding of the factors that influence respiratory health in rural Saskatchewan. Our hope is that this will lead to more effective respiratory health promotion and respiratory disease prevention efforts.

THE RESEARCH TEAM

The research team is led by Dr. James Dosman and Dr. Punam Pahwa of the University of Saskatchewan. Co-investigators include Dr. Josh Lawson, Dr. Donna Rennie, Dr. Chandima Karunanayake, Dr. Shelley Kirychuk, Dr. Niels Koehncke, Dr. Bonnie Jensen, Dr. Roland Dyck all of the University of Saskatchewan and Dr. Yue Chen of the University of Ottawa and Dr. Ambikaipan Senthilselvan of the University of Alberta. Ms. Louise Hagel is the project manager and Ms. Valerie Elliot is the research assistant.

TRAINEES

Our four graduate students, Ms. Meenu Rai, Ms. Rebecca Barry, Mr. Guangming Zhao and Mr. Luan Chu have successfully completed their Master of Science programs. Congratulations.

Ms. April Lie and Ms. Lakshmi Balakrishnan continue their work with our project.

PROGRESS TO DATE

The baseline and follow-up studies with adults and children are now complete. Other components of the study currently underway are the environmental study of grain dust exposure and the health care utilization study. The analyses of the results are well underway. To date the investigators have published 8 manuscripts in peer reviewed journals.

CONTACT US

For detailed information about the study including a list of publications please contact louise.hagel@usask.ca
Funded by the Canadian Institutes for Health Research (CIHR).

THE SASKATCHEWAN FARM INJURY SURVEILLANCE PROGRAM

This project is funded by the Canadian Centre for Health and Safety in Agriculture, Canadian Agriculture Injury Reporting, the Canadian Agriculture Safety Association and Agriculture and Agri-food Canada. CCHSA continues to participate as the provincial collaborator in the Canadian Agriculture Injury Reporting program. This program has been ongoing in Saskatchewan since 1995. Existing mortality and

morbidity data bases are used to track fatal and hospitalized farm injuries in the province. The farm injury surveillance data bases currently hold de-identified data for fatal injury cases for the period 1990 to 2013 and hospitalized farm injury cases for the period 1990 to 2007. The provincial data are shared with the Canadian Agriculture Injury Reporting program at the University of Alberta and comprise part of the Canadian agriculture injury database.

The co-investigators on this project are Ms Louise Hagel and Dr. Niels Koehncke of the Canadian Centre for Health and Safety in Agriculture, University of Saskatchewan. Collaborators on this project include the Office of the Provincial Coroner, the Ministry of Health and the Occupational Health and Safety Division of the Ministry of Labor Relations and Workplace Safety.

Updated provincial reports are published periodically and posted on the CCHSA website.

CAPACITY BUILDING

GRADUATE TRAINING PROGRAM IN PUBLIC HEALTH AND THE AGRICULTURAL RURAL ECOSYSTEM (PHARE)

2014 – 2015 UPDATE

The CIHR Strategic Training Initiative in Health Research entitled, “Public Health and the Agricultural Rural Ecosystem” (PHARE) provides scholarship support along the development continuum from Master’s through to Post Doctoral Fellows to train and mentor young scientists. Trainees participate in an annual conference and an online agriculture medicine/public health course and seminar. The PHARE national graduate training program accepted its last applications in May 2014 as the program concludes in March 2016.



2014-2015/16 PHARE AWARDEES:

Post Doctoral Fellows: Renée Dallaire, Université Laval; Arcadio Viveros Guzman, University of Saskatchewan/California; David Schneberger, University of Schneberger.

PhD: Juanita Bacsu, University of Saskatchewan; Allison Cammer, University of Saskatchewan; Luan Chu, University of Saskatchewan; Kelly Coons, Laurentian University; Joe Enright, University of Saskatchewan; HaiYan (LingLing) Fan, University of Lethbridge; Liz Gordon, University of Regina; Stacey Lovo Grona, University of Saskatchewan; Sharleen Jahner, University of Saskatchewan; Oluwafemi Oluwole, University of Saskatchewan; Dimitra Panagiotoglou, University of British Columbia; Janna Schurer, University of Saskatchewan.

Master's: Marc Parsons, University of Alberta.

CANADIAN AGRISAFETY APPLIED RESEARCH PROGRAM

A PROGRAM OF RESEARCH AND DEVELOPMENT

The Canadian Centre for Health and Safety in Agriculture, through its outreach program, is spearheading the Knowledge Translation component of the Canadian AgriSafety Applied Research Program. This program is funded in part by Agriculture and Agri-Food Canada through Agrivita Canada Inc., and involves research projects aimed at collaborations between industry and academic researchers to improve agricultural health and safety in two key areas, namely animal housing and transportation, and low cost roll over protective structures. The program will run until March 2018 and involves research teams from across Canada. In Year 1 (2014-15), CCHSA produced eight Knowledge Translation bulletins under the CanFarmSafe banner, for distribution to the Agricultural Health and Safety Network via the Network News, and for distribution by project partners to their outreach networks.

THE NATIONAL PARTNERS FUND

The original Founding Chairs Program renamed the National Partners Fund was established in 1989. The program goal is to create a secure financial base for CCHSA and provide opportunities for new program initiatives. A portion of the funds are used for special research projects, scholarships for graduate students and knowledge translation.

The fund is administered by a Founding Chairs Management Committee who meet twice yearly to make recommendations regarding the fund which is administered by the University of Saskatchewan. The Committee membership is comprised of 3 members who are Contributors and 3 members from the Uni-

versity of Saskatchewan. Current members are: Lyndon Carlson, Vice-President, Marketing and Product Development, Farm Credit Canada, Terry Baker, former Chair of Viterra Board of Directors, Dr. Niels Koehncke, Acting Director, Canadian Centre for Health and Safety in Agriculture, Dr. Preston Smith Dean, College of Medicine; Sue Verhille - Long, Financial Services Division. The Director of Institutional Advancement, Maura Gillis-Cipywnyk is responsible for coordinating the program in consultation with the Management Committee and the Acting Director

In 2014 a sponsorship campaign for our 7th International Symposium: "Safety and Health in Agricultural & Rural Populations: Global Perspectives" successfully raised in excess of \$100,000.00.

Future plans involve engaging Corporations in supporting specific program initiatives and planning how to incorporate CCHSA's 30th anniversary in 2016 into our proposals.

CANWORKSAFE

CANWORKSAFE has unique resources in occupational health and hygiene to provide modern and comprehensive occupational health surveillance and screening for workplaces in Saskatchewan.

CANWORKSAFE programs provide an opportunity for workers to have a regular health screening focused on their occupational exposures, receive current health information and education specific to workplace to reduce risk of developing occupational health diseases and disabilities, and referrals if needed. This type of regular screening promotes health and productivity and is well received by employees. In addition, workers have an opportunity to address common issues such as blood pressure, diet, exercise, stress, and sleep to promote healthy lifestyles.

In 2013, CANWORKSAFE started a new Hearing screening service for Saskatchewan Rural Municipality employees throughout the province. This program is in partnership with the Agricultural Health and Safety Network and is continuing to grow with increased awareness and positive feedback.



Respiratory Health Screening and Quantitative Fit Testing were delivered to Novozymes BioAg Limited of Saskatoon employees in June 2014. In the summer of 2015 CANWORKSAFE will be providing the Swine Workers Health Maintenance Program for several swine barns in Saskatchewan and Manitoba.

SERVICES



THE AGRICULTURAL HEALTH AND SAFETY NETWORK

The Canadian Centre for Health and Safety in Agriculture (CCHSA) partnered with the Saskatchewan Association of Rural Municipalities (SARM) and six Rural Municipalities in 1988 to found the Agricultural Health and Safety Network with the mission “to improve health and safety on the farm through education, service, and evaluation research.” The Network is now in its 27th successful year, providing occupational health and safety services to 217 RMs that are members of the Network reaching approximately 30,000 farm families.

MEMBERSHIP RECRUITMENT AND FUNDING

The Network’s current membership includes 217 RMs. These RMs pay an annual fee of \$3.75 per active farm family to benefit from the Network resources and services. The maximum membership fee continues to be capped at \$1200 per RM. These partnerships act as the foundation of the Network and provide leverage to draw additional resources to better serve Saskatchewan farmers, their families and agricultural workers. The Saskatchewan Ministry of Agriculture also provides funding to the Network.

We would like to welcome the following new RMs to the Network:

RM of Bone Creek #108	RM of Sarnia #221
RM of Big Stick #141	RM of Hillsborough #132
RM of Wheatlands #163	RM of Rodgers #133

STEERING COMMITTEE

The Steering Committee is an advisory group composed of RM councilors and a Saskatchewan Ministry of Agriculture representative.

These committee members, who represent the voice of Saskatchewan farmers, their families and their workers, provide direction and feedback on programs delivered in the Network. Their support and input are invaluable to the Network.

The members of the Steering Committee are as follows:

Division 1	Stanley Lainton	RM of Coalfields #4
Division 2	Duane Filson	RM of Wood River #74
Division 3	Floyd Thunstrom	RM of Coteau #255
Division 4	Brenda Zemluk	RM of Elfros #307
Division 5	Eugene Matwishyn	RM of Prince Albert #461
Division 6	Gary Hoppe	RM of Glenside #377
	Andre Bonneau	Ministry of Agriculture

NETWORK NEWSLETTER & OTHER PUBLICATIONS

In 2014 the Network focused on the issue of back safety through promoting exercise and ergonomically correct farming practices with the goal of preventing back strain and injuries that are common in the agriculture industry. Awareness was directed towards assisting producers to improve their current back conditions and quality of life to reduce costs associated with injury and time away from work.



The 2014 fall issue of Network News was delivered to 30,000 Saskatchewan farm families with the resource “SAVE YOUR BACK: Prevention of Agricultural Related Back Strain and Injury” resource. In addition the newsletter includes current agriculture issues, scholarship information, farm safety articles and tips, and contact information.

The Network provides health and safety articles for other magazines and newsletters. This is a valuable opportunity to promote the Network and provide outreach beyond our membership. The Network contributes an article to the Rural Councilor (SARM’s publication with a readership of 2000) as well as provides interviews with various agricultural publications/media such as Country Guide, The Western Producer, and CJWW radio “Let’s talk Agriculture”.

PROJECTS

SAVE YOUR BACK: Prevention of Agricultural Related Back Strain and Injury Resource



This new resource will inspire you to take care of your back and encourage your family members and workers to also take steps to promote back safety. By learning why we promote back safety and identifying activities (risk factors) that exist in our work that could cause back injury such as lifting, repetitive strain injury and machinery operation we are better equipped for prevention of injury. The importance of taking stretch breaks is highlighted with a

simple easy to follow routine. A new five-year study at CCHSA is in progress to examine how to prevent aches and pains from developing in to more serious, long-term injuries for farmers and agricultural workers in Saskatchewan. As the Network is a link between CCHSA research and distributing health and safety information in rural Saskatchewan, the Network looks forward to sharing new information in this area.

WORKSHOPS

The Network hosted a one day training event in Saskatoon on November 12, 2004 focusing on the Canada FarmSafe Plan developed by the Canadian Agricultural Safety Association and presented by Glen Blahey. This training was successful in giving leaders and producers in the agricultural industry the tools they needed to help producers develop and implement a customized Canada FarmSafe Plan. This plan is a valuable business risk management tool. A grant of \$10,000 from Farm Credit Canada and the Canadian Agriculture Safety Association helped support this workshop.



Clinics for farmers are offered by the Network to promote the overall health and well-being of farm families and farm workers. Network member RMs are invited to host either a Respiratory Health or Hearing Loss Prevention Clinic for

active farm family ratepayers in their local communities or farmers have the option to phone the Network to make an appointment to attend a One2One Clinic at the CCHSA clinic at the University of Saskatchewan.

Health Clinics for Saskatchewan farm families and farm workers were hosted in the following communities: Preeceville, Yorkton, Bradwell, Mankota, Golden Prairie, Paradise Hill, Wilkie, Cupar, Lloydminster, LeRoy, Blaine Lake, Elfros, Wadena, Wilkie, Fiske, Easton and Burr.

SARM SCHOLARSHIP

The Scholarship's History: In 1995, the Saskatchewan Association of Rural Municipalities (SARM) auctioned off the first copy of its history book "The Building of a Province: Commemorating the 90th Anniversary of the Saskatchewan Association of Rural Municipalities." This auction netted the sum of \$2,600 which the SARM Board of Directors contributed to the Canadian Centre for Health and Safety in Agriculture (CCHSA). These funds initiated the SARM 90th Anniversary \$1,000 Student Scholarship in Agricultural Safety & Rural Health. The CCHSA's Founding Chairs Program maintains the scholarship.

This year two \$1500 scholarships were awarded to grade 12 students, Alysandria Harland from the RM of Britannia #502 and Cameron Choquette from the RM of Kelvington #366.



Alysandria Harland,
RM of Britannia # 502

"Farm safety has become a more common topic in Grandma's kitchen these days. With sixteen family members working together the odds of an accident are greater than a farm with only two experienced adults.

By developing a series of rules and a safety plan specific to our farm, we are hopeful that we have eliminated most hazards and have achieved a safe work environment."



Cameron Choquette
RM of Kelvington # 366

"Using the proper equipment keeps all people safe when working on the farm because unsafe workers are a hazard to not only themselves but to everyone."

TECHNICAL REPORTS & PRESENTATIONS RELEVANT TO ACADEMIC FIELD

Branger C, Burton R, O'Connell ME., Stewart N, Morgan D. Coping with cognitive impairment and dementia: Rural caregivers' perspectives. Poster presentation at 7th Annual Summit of the Knowledge Network in Rural and Remote Dementia Care.

Gold B, Enright J, O'Connell ME, Morgan, D. Reliable Change (RCI) on Repeatable Battery for the Assessment of Neuropsychological Status (RBANS) in a dementia sample. Poster presentation at 7th Annual Summit of the Knowledge Network in Rural and Remote Dementia Care.

Holfeld L, Morgan D, O'Connell ME, Crossley M, Kirk A, Stewart N, Dal Bello-Haas V, McBain L, Cammer A, Minish D, Beever R, Kosteniuk J. Rural and Remote Memory Clinic – Updated (March 2004 – June 2014) Poster presentation at 7th Annual Summit of the Knowledge Network in Rural and Remote Dementia Care.

Kosteniuk J, Morgan DG, Quail JM, Teare, GT, Kulyk K, O'Connell ME, Kirk A, Crossley M, Stewart NJ, Dal Bello-Haas V, McBain L, Mou H, Forbes D, Innes A, Bracken J, Parrott E. 2015. A Multi-Method Investigation of Dementia and Related Services in Saskatchewan: Final Report and Recommendations. Saskatoon, Saskatchewan: University of Saskatchewan. 178 pgs.

Kosteniuk J, Morgan DG, Dal Bello-Haas V. 2014. Dementia Learning Needs Assessment for Sun Country Health Region: Survey Report. Saskatoon, Saskatchewan: University of Saskatchewan. 31 pgs.

Kosteniuk J, Morgan, D (Co-editors). (2015, March). RaDAR Newsletter: March 2015, 1(2). University of Saskatchewan: Saskatoon, Saskatchewan. 2 pgs.

Kosteniuk J, Morgan D (Co-editors) (2014, December). RaDAR Newsletter: December 2014, 1(1). University of Saskatchewan: Saskatoon, Saskatchewan. 2 pgs.

Kulyk K, Stewart N, Peacock S, Morgan D, O'Connell ME, Kosteniuk, J. Evaluating the construction and validity of a questionnaire assessing healthcare provider perceptions of rural dementia care pathways. Poster presentation at 7th Annual Summit of the Knowledge Network in Rural and Remote Dementia Care.

Lawson JA. Geographic variation in childhood asthma. Presented to the respiratory and pediatrics department in Batumi, Republic of Georgia

Lawson JA. Geographic variation in childhood asthma. Presented to the epidemiology and respiratory departments in Skopje, Macedonia
Lawson JA. Publishing in Scientific Journals: The Whys, Hows, and Special Considerations. Presented to: 2nd International Conference of the Higher School's Pulse; Opole, Poland

Morgan D. & Kosteniuk J. A Multi-Method Investigation of Dementia and Related Services in Saskatchewan: Final Report and Recommenda-

tions. Radio interview with Sarah Stone, CKBI Radio Station, Prince Albert, Saskatchewan. April 10, 2015.

Morgan D. Chair & Presenter, Summit 7 - Knowledge Network in Rural and Remote Dementia Care - 7th Annual Summit. Knowledge exchange meeting of research team and Decision-Maker Advisory Council, CIHR-SHRF Applied Chair in Health Services and Policy Research, Saskatoon, SK, October 21st & 22nd, 2014.

Morgan D. Interviewee – Linklater L. (Producer). (2015, January 29). Guest on Middy Cafe to discuss the RaDAR-HQC collaboration information release [Radio broadcast]. Whitehorse, YT: Canadian Broadcasting Corporation.

Morgan D. Research release – Joehnck M. (2015, January 28). Dementia study researchers stumped by findings in province's North. Missinipi Broadcasting Corporation Online. Available online <http://www.mbcradio.com/index.php/mbc-news/14585>

Morgan D. Research release – RaDAR-HQC collaboration (2015, January 28,). Early diagnosis better for demetia patients: Saskatchewan researcher. Brandon Sun. Available online <http://www.brandonsun.com/lifestyles/breaking-news/290144761.html>

Morgan D. Research release (2015, January 27). U of S researchers, Health Quality Council release dementia report and recommendations. University of Saskatchewan News. Available from <http://words.usask.ca/news/2015/01/27/u-of-s-researchers-health-quality-council-release-dementia-report-and-recommendations/>

Morgan D. Developing and sustaining a community-based participatory research program in rural dementia care. Invited presentation with the University of Saskatchewan College of Nursing, Rural and Remote Health Cluster, Saskatoon, (and via TeleHealth to Regina, and Prince Albert), SK, February 9, 2015.

Morgan D. Developing and sustaining a community-based participatory research program in rural dementia care. Invited lecture with the Western Regional Training Centre on Health Services Research, Saskatoon, SK, November 21, 2014. Available from: <http://youtu.be/rGeYowFDXw8>

Morgan D. Interviewee – Joehnck M. (Producer). (2015, January 27). RaDAR-HQC collaboration information release [Radio broadcast]. LaRonge, SK: Missinipi Broadcasting Corporation.

Morgan D. Interviewee – Stone S. (2015, April 16). Dementia diagnosed too late in Sask.:report. [Print Interview]. CKBI Radio/paNOW.com. Available online <http://panow.com/article/509710/dementia-diagnosed-too-late-sask-report>

Morgan D. Research profile – collaboration, (2014, November 24-30). Researchers collaborate on dementia project, Saskatoon Express, 22.

Morgan D. Research profile – RaDAR Team partnership with Regional Primary Health Care Team, (2015, February). Kipling PHC works on dementia research, Sun Country Chatter, p. 4. Available from <http://sun-country.sk.ca/>

Morgan D. Research profile, (2015, February 27). Dementia over distance: Meeting care needs in rural and remote areas, *On Campus News*, 22(12), p. 9. Available from http://words.usask.ca/news/files/OCN_Feb27_web.pdf

Morgan, D. Research release – RaDAR-HQC collaboration (2015, January 29). Early diagnosis better for dementia patients: Saskatchewan researcher. *Vancouver Sun*. Available online <http://www.vancouversun.com/health/health/10768593/story.html>

Morgan D. Research release – RaDAR-HQC collaboration (2015, January 29). Early diagnosis helps dementia patients, prof says. *The StarPhoenix*, p. A6.

Morgan D. Research release – RaDAR-HQC collaboration (2015, January 29). Early diagnosis better for dementia patients: Study. *Global News*. Available online <http://globalnews.ca/news/1799588/>

Morgan D. Research release – RaDAR-HQC collaboration (2015, January 28). Early diagnosis better for dementia patients: study. *Blackburn News*. Available online <http://blackburnnews.com/bri-lifestyle/2015/01/28/early-diagnosis-better-for-dementia-patientsstudy/>

Morgan D. Research release – RaDAR-HQC collaboration (n.d.). Early diagnosis better for dementia patients: Saskatchewan researcher. *YahooNews.com*. Available from <https://ca.news.yahoo.com/early-diagnosis-better-dementia-patients-saskatchewan-researcher-010823409.html>

Morgan D. Research Summary – (2014, September 8). Research-to-Practice Spotlight: Knowledge Exchange throughout the dementia care journey, *On the Horizon, Addiction and Mental Health: Linking Research and Practice*, Alberta Health Services Newsletter. Available online www.mailoutinteractive.com/Industry/LandingPage.aspx?id=1526448&lm=36317870&q=778872650&qz=fb8d21fdd96fc2655ece38cafb49143

Morgan D. Researcher collaboration profile, (posted online October 14, 2014). HQC and RaDAR partner on dementia project, Saskatchewan Health Quality Council website. Available online <http://hqc.sk.ca/news-events/whats-new/hqc-and-radar-partner-on-dementia-project>.

Morgan D. Researcher contributor – (2015, February 17). Living with dementia on the farm: Alzheimer's is a frightening diagnosis, but these strategies can maximize your control, *Country Guide*, (Western Edition), 64-65.

Morgan D. Social media presence – RaDAR-HQC collaboration (2015, January 29). Early diagnosis better for dementia patients: study. Shared by Global Edmonton on Facebook. Available from <https://www.facebook.com/GlobalEdmonton/posts/10152499440535927>

Morgan D. Social media presence – RaDAR-HQC collaboration (2015, January 29). Early diagnosis better for dementia patients: Saskatchewan researcher. Linked from Edmonton Journal on veoz. Available from <https://www.veoz.com/news/aINki09.html>

Morgan D, Kosteniuk J. (2015). A Multi-Method Investigation of Dementia and Related Services in Saskatchewan: Final Report and Recommendations. Presentation to Alzheimer Society of Saskatchewan Board.

Saskatoon, SK, March 28, 2015.

Morgan D, Kosteniuk, J. (2015). A Multi-Method Investigation of Dementia and Related Services in Saskatchewan: Final Report and Recommendations. Presentation to Prince Albert Parkland Health Region Board. Prince Albert, SK, March 25, 2015.

Morgan D, Kosteniuk, J. RaDAR-HQC A multi-method investigation of dementia related services in Saskatchewan. Presentation to the Supportive Services Committee Meeting of the Saskatchewan Ministry of Health, via WebEx (Regina), January 8, 2015.

Morgan D, Kosteniuk J, Crossley M, O'Connell M, Kirk A, Stewart N, Dal Bello-Haas V, Forbes D, Innes A, McBain L, Mou H, Parrott E. Team 20 of the Canadian Consortium on Neurodegeneration in Aging (CCNA): Rural Dementia Action Research (RaDAR). Poster presentation at Health Care Quality Summit, Saskatoon, SK, May 7, 2014.

Morgan D, Kosteniuk J, Quail J. (Co-Presenters). RaDAR-HQC Gap Analysis of Dementia Care. Presentation and group discussion at the Knowledge Network in Rural and Remote Dementia Care: Seventh Annual Summit, Saskatoon, October 22, 2014.

Morgan D, O'Connell ME, Bracken J, Tandon, D, (Podcast participants) – Beyond the Manuscript, (Fall 2014). A podcast interview hosted by Project Muse as a way to share the researchers' perspective on the behind-the-scenes work that went into the preparation of the 2014 manuscript Evolution of a Community-Based Participatory Approach in a rural and remote dementia care research program as published in the journal *Progress in Community Health Partnerships: Research, Education, and Action*. A transcript of the podcast is available online doi: 10.1353/cpr.2014.0043

Trask C, Kociolek A. Ergonomics at the U of S: musculoskeletal research in the lab and beyond. School of Physical Therapy Research Seminar, University of Saskatchewan, April 17, 2015, Saskatoon, Canada.

Trask C. The effect of 'Guesstimation': daily posture summaries from partly-visible video observation of flightloaders. Centre for Musculoskeletal Research (CBF) University of Gävle. Dec 2, 2014, Gävle, Sweden.

Trask C. Addressing Musculoskeletal Health in Saskatchewan: Tale of a CRC in Ergonomics and Musculoskeletal Health. Canada Research Chair Forum, Saskatoon National Research Centre, September 19, 2014, Saskatoon, Canada.



- Barry RJ, Pickett W, Rennie DC, Dosman JA, Pahwa P, Hagel L, Karunanayake C, Lawson JA. The role of farm operational and rural environments as potential risk factors for pediatric asthma in rural Saskatchewan. *Pediatric Pulmonology*. 2014; 49:842-51.
- Bath B, Trask C, McCrosky J, Lawson J. A biopsychosocial profile of adult Canadians with and without chronic back disorders. *Biomed Research International*, 2014, Article ID 919621, 11 pages. <http://www.hindawi.com/journals/bmri/2014/919621/>
- Bath B, Trask C, McCrosky J, Lawson J. Demographic and health characteristics of rural- and urban-dwelling Canadians with chronic back disorders: A population-based comparison. *Spine*. 2014; 39:1960-8. <http://www.ncbi.nlm.nih.gov/pubmed/?term=10.1097%2FBRS.0000000000000561>
- Branger C, Burton R, O'Connell M, Stewart N, Morgan D. (online before print June 20, 2014). Coping with cognitive impairment and dementia: Rural Caregivers' Perspectives. *Dementia: The International Journal of Social Research and Practice*. doi: 10.1177/1471301214539956
- Burton R, Enright J, O'Connell M, Lanting S, Morgan D. (first published online December 3, 2014). RBANS embedded measures of suboptimal effort in dementia: Effort scale has a lower failure rate than the effort index. *Archives of Clinical Neuropsychology*. doi: 10.1093/arclin/acu070
- Chu L, Rennie DC, Cockcroft DW, Pahwa P, Dosman J, Hagel L, Karunanayake C, Lawson J. Prevalence and determinants of atopy and allergic diseases among school-age children in rural Saskatchewan, Canada. *Annals of Allergy, Asthma, and Immunology*. 2014; 113:430-9.
- Dal Bello-Haas V, Cammer A, Morgan D, Stewart N, Kosteniuk J. (2014). Rural and remote dementia care challenges and needs: perspectives of formal and informal care providers residing in Saskatchewan, Canada. *Rural and Remote Health*, 14, 2747. Available from www.rrh.org.au
- Dal Bello-Haas V, O'Connell M, Morgan D, Crossley M. (2014). Lessons learned: feasibility and acceptability of a telehealth delivered exercise intervention for rural-dwelling individuals with dementia and their caregivers. *Rural and Remote Health*, 14, 2715. Available from www.rrh.org.au
- Dal Bello-Haas V, O'Connell ME, Morgan D. (2014). Maintaining health and wellness in the face of dementia: an exploratory analysis of individuals attending a rural and remote memory clinic. *Rural and Remote Health*, 14, 2722. Available from www.rrh.org.au
- Estabrooks C, Squires J, Hayduk L, Morgan D, Cummings G, Ginsburg L, Stewart N, McGilton K, Kang SH, Norton P. (2015) The influence of organizational context on best practice use by care aides in residential long-term care settings. *Journal of the American Medical Directors Association*, 16(6), 537.e1-537.e10. doi: 10.1016/j.jamda.2015.03.009
- Forbes DA, Strain L, Blake C, Peacock S, Harrison W, Woytkiw T, Hawranik P, Thiessen E, Woolf A, Morgan D, Innes A, Gibson M. (2015). Dementia care evidence: Contextual factors that influence use in northern home care centres. *Online Journal of Rural Nursing and Health Care*, 15(1). doi: 10.14574/ojrnhc.v15i1.344
- Guarrasi J, Trask C, Kirychuk S. A Systematic Review of Occupational Exposure to H2S in Livestock Operations. *Journal of Agromedicine*. 2015, Apr; 20(2): 224-235 Epub 2015 Apr.<http://www.tandfonline.com/doi/full/10.1080/1059924X.2015.1009667>
- Janzen B, Karunanayake C, Pahwa P, Dyck R, Rennie D, Lawson J, Pickett W, Bryce R, Hagel L, Zhao G. Exploring diversity in socioeconomic inequalities in health among rural dwelling Canadians. *Journal of Rural Health*. 2014;ePub ahead of print. Epub 2014.
- Katselis G, Chumala P, Gordon J, Kirychuk S, Thompson B, Dawicki W. Mass Spectrometry-based chemical and biological evaluation of agricultural dusts. Presented: American Society of Mass Spectrometry (ASMS) 2015; 2015 May 31-Jun 4; St. Louis, Missouri
- Katzman M, Lawson J, Whiting S, Rosenberg A. Factors associated with cord blood vitamin D concentration in Saskatchewan newborns. *Applied Physiology, Nutrition, and Metabolism*. 2014; 5:1-4.
- King N, Pickett W, Hagel L, Lawson J, Trask C, Dosman JA. Impact of excessive daytime sleepiness on the safety and health of farmers in Saskatchewan. *Canadian Respiratory Journal*. 2014; 21(6):363-9.
- Kosteniuk J, Wilson E, Penz K, MacLeod M, Stewart N, Kulig J, Karunanayake C, Kilpatrick K. Development and psychometric evaluation of the Primary Health Care Engagement (PHCE) Scale: a pilot survey of rural and remote nurses. 2015. *Primary Health Care Research and Development*, Firstview published online March 19, 2015 (DOI:10.1017/S1463423615000158).
- Kosteniuk J, Morgan D, O'Connell M, Crossley M, Kirk A, Stewart N, Karunanayake C. (2014). Prevalence and covariates of elevated depressive symptoms in rural memory clinic patients with mild cognitive impairment or dementia. *Dementia and Geriatric Cognitive Disorders Extra*, 4(2), 209-220. doi: 10.1159/000363226
- Milosavljevic S, Clay L, Bath B, Trask C, Penz E, Stewart S, Hendrick P, Baxter DG, Hurley DA, McDonough S.A. Walking away from back pain: one step at a time - a community-based randomised controlled trial. *BMC Public Health*. 2015, 15:144. doi:10.1186/s12889-015-1496-9 <http://www.biomedcentral.com/1471-2458/15/144/abstract>
- Morgan D, Crossley M, Stewart N, Kirk A, Forbes D, D'Arcy C, Dal Bello-Haas V, McBain L, O'Connell M, Bracken J, Kosteniuk J, Cammer A. (2014). Evolution of a community-based participatory approach in a Rural and Remote Dementia Care Research Program. *Progress in*

Community Health Partnerships: Research, Education, and Action, 8(3), 337-345. doi: 10.1353/cpr.2014.0040

Morgan, D., Kosteniuk, J., Stewart, N., O'Connell, M., Karunanyake, C., & Beever, R. (2014). The Telehealth Satisfaction Scale (TeSS): Reliability, validity, and satisfaction with telehealth in a rural memory clinic population. *Journal of Telemedicine and e-Health*, 20(11), 997-1003. doi: 10.1089/tmj.2014.0002

O'Connell, M., Dal Bello-Haas, V., Crossley, M., & Morgan, D. (2015). Attitudes toward physical activity and exercise: comparison of memory clinic patients and their caregivers and prediction of activity levels. *Journal of Aging and Physical Activity*, 23(1), 112-119. doi: 10.1123/japa.2013-0035

O'Connor AM, Auvermann BW, Higgins JP, Kirychuk SP, Sargeant JM, Von Essen SG, Glanville JM, Wood H. The Association between proximity to animal-feeding operations and community health: a protocol for updating a systematic review. *Systematic Reviews*. 2014 Sep;3:99-106.

Pickett W, King N, Lawson J, Dosman J, Trask C, Brison R, Hagel L, Janssen I. for the Saskatchewan Farm Injury Study Team Farmers, mechanized work, and links to obesity. *Preventative Medicine*. 2014, Jan;70:59-63. <http://www.ncbi.nlm.nih.gov/pubmed/25448840>

Pickett W, King N, Lawson J, Dosman JA, Trask C, Brison RJ, Hagel L, Janssen I. Farmers, mechanized work, and links to obesity. *Preventive Medicine*. 2014;70:59-63.

Trask C, Kirychuk S. Musculoskeletal Symptoms and Biomechanical Exposures in Intensive Swine Production. *Journal of Agromedicine*, 2014, 19(2):245-246 <http://www.tandfonline.com/doi/full/10.1080/1059924X.2014.892851>

Trask C, Mathiassen SE, Wahlström J, Forsman M. Cost-efficient assessment of biomechanical exposure in occupational groups, exemplified by posture observation and inclinometry. Accepted for publication at the *Scandinavian Journal of Work, Environment, and Health*; 2014, http://www.sjweh.fi/show_abstract.php?abstract_id=3416

Trask C, Rostami M, Mathiassen SE. Partly visible periods in posture observation from video: prevalence and effect on summary estimates of postures in the job. *Applied Ergonomics*. 2015, 49:63-69 <http://www.sciencedirect.com/science/article/pii/S0003687015000186>.

CONFERENCE PROCEEDINGS & ABSTRACTS

Bath B, Taylor-Gjevre RM, Nair B, Stewart S, Arendse R, Naik L, Trask C, Penz E, Sharma M, Crockett K. Bridging the rural-urban divide for patients with rheumatoid arthritis through interprofessional care delivered by telehealth/videoconferencing. Presented: Canadian Agency of Drugs and Technologies in Health (CADTH) 2015 Symposium; April 12-14; Saskatoon, SK. 2015.

Birkett, P., Edvardsson, D., Innes, A., Dias, A., & Morgan, D. Gateway to rural international initiatives in dementia (GRIID): Connecting services internationally. Presented: ADI 2014 Congress, San Juan, PR, May 1-4, 2014.

Cammer, A., O'Connell, M., Morgan, D., & Whiting, S. Nutrition care needs of Alzheimer disease versus non-Alzheimer disease dementia patients. Presented: 2014 Annual Canadian Association for Health Services and Policy Research (CAHSPR) Conference, Toronto, ON, May 13-15, 2014.

Chu L, Rennie DC, Cockcroft D, Pahwa P, Dosman JA, Hagel L, Karunanayake C, Lawson J. Do farming exposures protect school age children from hayfever and atopy? In: *American Journal of Respiratory and Critical Care Medicine*. Presented: American Thoracic Society International Conference; 2014; San Diego, CA. Meeting Abstracts. 189, 2014.

Dal Bello-Haas, V., Crossley, M., O'Connell, M., Morgan, D., & Kirk, A. Characteristics of falls in community dwelling older adults with early memory problems. Presented: Alzheimer's Association International Conference (AAIC) 2014. Copenhagen, Denmark, July 13-17, 2014.

Dal Bello-Haas, V., Crossley, M., O'Connell, M., Morgan, D., & Kirk, A. Falls in community dwelling older adults with early memory problems. Presented: Alzheimer's Association International Conference (AAIC) 2014. Copenhagen, Denmark, July 13-17, 2014.

Dal Bello-Haas, V., O'Connell, M.E., & Morgan, D. An exploratory analysis of health and wellness behaviours in individuals attending a rural and remote memory clinic. Presented: 43rd Annual Scientific and Educational Meeting, Canadian Association on Gerontology. Niagara Falls, ON, October 14-16, 2014.

Dal Bello-Haas, V., O'Connell, M.E., & Morgan, D. Fitness and physical activity levels of individuals attending a rural and remote memory clinic. Presented: 43rd Annual Scientific and Educational Meeting, Canadian Association on Gerontology. Niagara Falls, ON, October 14-16, 2014.

Danylyshen-Laycock, T., & Morgan, D. Examining the relationship between leadership and sustainability of a dementia training program in long-term care. Presented: 67th Annual Scientific Meeting, The Gerontological Society of America, Washington, DC, November 5-9, 2014.

Dosman JA, Gjevre JA, Karunanayake C, Rennie DC, Lawson J, Hagel L, Dyck R, Gordon J, Pahwa P. Predicting sleep apnea in the clinic. In: *Chest*. Presented: Chest World Congress; 2014; Madrid, Spain. Meeting Abstracts. 145, 2014.

Essien S, Trask C. Association between whole body vibration and low back disorder in farmers: a prospective cohort data. Presented: Saskatchewan Epidemiology Association (SEA) 14th Annual Conference. October 23-24, Saskatoon, Canada. Third prize of the Saskatchewan Epidemiology Association Best Poster award.

Estabrooks, C., Squires, J., Hayduk, L., Morgan, D., Cummings, G., Ginsburg, L., & Norton, P. Does organizational context influence the use of best practices by healthcare aides in residential long term care. Presented: 7th Annual Conference on the Science of Dissemination and Implemen-

CONFERENCE PROCEEDINGS & ABSTRACTS

tation: Transforming Health Systems to Optimize Individual and Population Health, Bethesda, MD, December 8-9, 2014.

Harrison E, Chad K, Reeder B, Bruner B, Lawson J, Fisher K, Ashworth N, Sheppard S. Factors influencing physical activity levels in community dwelling older adults. Presented: Canadian Physiotherapy Association National Congress 2014; 2014; Edmonton, AB

Karunanayake C, Lawson J, Rennie DC, Hagel L, Dosman JA, Pahwa P. Assessing airflow obstruction in a rural population: The Saskatchewan Rural Health Study. In: Chest. Presented: Chest World Congress; 2014; Madrid, Spain. Abstract 145, 2014.

Khan MI, Trask C, Adebayo O, Boden C, Bath B. Posture as a risk factor for low back disorders (LBD) in farmers. A systematic review. Presented: Saskatchewan Epidemiology Association (SEA) 14th Annual Conference. October 23-24, Saskatoon, Canada.

Kiryuchuk S, Lawson J, Rennie D, Cockcroft D, Owusu-Kyem A, Katselis G, Asselin J, Gordon J. Respiratory outcomes and relationships to airborne contaminants in two Saskatchewan communities. Presented: International Society of Environmental Epidemiology 26th Annual Conference (Aug 24-29, 2014); 2014; Seattle, WA, USA

Kiryuchuk S, Rennie D, Karunanayake C, Lawson J, Russell E, Seesequasis E, Gamble E, Bird D, Seesequasis J, Naytowhow A, Pahwa P, Abonyi S, Episkinew J-A, Dosman J. Housing conditions and respiratory outcomes in two Saskatchewan First Nations Communities. Presented: Indigenous Health Conference; 2014 Nov 20-20; Toronto

Kiryuchuk S. Engineering controls to reduce swine worker exposure and pathogen transmission between individual animals and swine barns. Presented: 2015 American Industrial Hygiene Conference and Exposition; 2015 Jun 4-4; Salt Lake City, Utah

Lawson J, Rennie D, Dyck R, Cockcroft D, Oluwole O, Afanasieva A. Childhood asthma severity indicators in relation to rural dwelling. Presented: International Society of Environmental Epidemiology 26th Annual Conference (Aug 24-28, 2014); 2014; Seattle, WA, USA

Lawson J, Rennie D, Dyck R, Cockcroft D, Pahwa P, Oluwole O, Afanasieva A. Childhood asthma and related conditions along an urban-rural gradient. In: American Journal of Respiratory and Critical Care Medicine. Presented: American Thoracic Society International Conference; 2014; San Diego, CA. Meeting Abstracts. 189, 2014.

Liu A, Trask C, Pahwa P. Cost-Effective Exposure Assessment Using Administrative Data: Exposure Prediction Modeling for Occupational Hand Arm Vibration. Presented: Saskatchewan Epidemiology Association (SEA) 14th Annual Conference. Oct 23, 2014, Saskatoon, Canada.

MacLeod M, Garraway L, Karunanayake C, Kilpatrick K, Kosteniuk J, Penz K, Stewart N. Revising a pilot survey for success: lessons learned in

a rural and remote nursing study. Presented: International Rural Health and Rural Nursing Conference, Bozeman, Montana, July 29, 2014.

Madani K, Vlaski E, Rennie D, Lawson J. An investigation of reasons for international variation in asthma prevalence. In: American Journal of Respiratory and Critical Care Medicine. Presented: American Thoracic Society International Conference; 2014; San Diego, CA. Meeting Abstracts. 189, 2014.

Morgan D, Kosteniuk J, O'Connell M, Dal Bello-Haas V, Stewart N, Kesler P. Work activities and perceived competencies related to dementia among rural home care providers. Presented: 67th Annual Scientific Meeting, The Gerontological Society of America. Washington, DC, November 5-9, 2014.

Pahwa P, Karunanayake C, Rennie DC, McMullin K, Lawson J, Seesequasis J, Naytowhow A, Owusu-Kyem A, Hagel L, Abonyi S, Episkinew J, Dosman J. Prevalence of chronic bronchitis in First Nations people. Presented: In: Chest. Chest World Congress; 2014; Madrid, Spain. Meeting Abstracts. 145, 2014.

Rennie D, Karunanayake C, Dosman J, Lawson J, Abonyi S, Episkinew J, McMullen K, Russell B, Warkentin S, Naytowhow A, Pahwa P. Domestic Risk Factors For Childhood Asthma And Wheeze In A First Nations Population. In: American Journal of Respiratory and Critical Care Medicine. Presented: American Thoracic Society International Meeting; 2014; San Diego, CA. Meeting Abstracts. 189, 2014.

Rostami M, Trask C, Mathiassen SE. The effect of 'Guesstimation': daily posture summaries from partly-visible video observation. Presented: Saskatchewan Epidemiology Association (SEA) 14th Annual Conference. October 23-24 Saskatoon, Canada. Second prize of the Saskatchewan Epidemiology Association Best Poster award.

**59 PRESENTATIONS AT THE:
7th International Symposium: Safety & Health in Agricultural & Rural Populations: Global Perspectives
October 19-22, 2014, Saskatoon, SK, Canada**

Abonyi S, Karunanayake C, Rennie D, McMullin K, Seesequasis J, Naytowhow A, Lawson J, Owusu-Kyem A, Hagel L, Pahwa P, Episkinew Jo-Ann, Dosman JA and the First Nations Lung Health Project Research Team. Health of Seniors in Two Saskatchewan First Nations Communities.

Adebayo O, Trask C, Khan MI, Boden C, Bath B. Prevalence of Low back disorder in Agriculture: Variation by geography, commodity, and worker characteristics.

Albritton W, Karunanayake C, Rennie D, Lawson J, Seesequasis J, Naytowhow A, Abonyi S, Episkinew Jo-Ann, Dosman JA, Pahwa P, and the First Nations Lung Health Project Research Team. Prevalence of Ear Infection in First Nations and Rural School-Aged Children.

Awoyera O, Kiryuchuk S, Rennie D, Lawson J, Koehncke N, Cockcroft D, Gordon J, Katselis G. Association of airborne dust-related endotoxin levels with respiratory outcomes in two Saskatchewan rural communities.

- Bath B, Trask C, McCrosky J, Lawson J. Examining differences in biopsychosocial characteristics among people with chronic back disorders across the rural-urban continuum.
- Branger, C., Burton, R., O'Connell, M.E., Stewart, N., & Morgan, D. Coping with cognitive impairment and dementia: Rural caregivers' perspectives.
- Brozek G, Zejda J, Fedortsiv O, Shpakou A, Hryshchuk L, Strizhak A, Lawson J, Rennie D. Epidemiology of childhood asthma in Belarus, Ukraine and Poland – Geographic and temporal variation.
- Chen Y, Rennie D, Karunanayake C, Hagel L, Pickett W, Janzen B, Dyck R, Lawson J, Dosman J, Pahwa P and the Saskatchewan Rural Health Study Team*. Income adequacy and education associated with the prevalence of obesity in rural Saskatchewan.
- Chu L, Rennie D, Cockcroft D, Pahwa P, Dosman J, Hagel L, Karunanayake C, Lawson J, and the Saskatchewan Rural Health Study Team. Sensitivity and Specificity of Questionnaire Responses in Predicting Positive Skin Prick Testing for Atopy in School-age Children: The Saskatchewan Rural Health Study
- Chu LM, Rennie DC, Cockcroft DW, Pahwa P, Dosman J, Hagel L, Karunanayake C, Lawson JA. Validation of Questionnaire Predictors and Objective Measures of Atopy in School-age Children: Saskatchewan Rural Health Study.
- DeWit Y, Pickett W, Lawson J. Associations between Exposure to High-Risk Farm Activities and Agricultural Injuries in Youth and Young Adults Farm Workers
- Dosman J, Hagel L, Kirychuk S, Lawson J, Trask C, Pickett W. The Hierarchy of Control and the Prevention of Farm Injury and Death.
- Episkenew Jo-Ann, Abonyi S, Dyck R, Janzen B, Karunanayake C, Seesequasis J, Naytowhow A, Dosman JA, Pahwa P, and the First Nations Lung Health Project Research Team. Consequences of Colonization on Lifestyle Risk Factors.
- Essien S, Trask C. Association between whole body vibration and low back disorder in farmers: a systematic review.
- Gould, B., Enright, J., O'Connell, M.E., & Morgan, D. Reliable Change (RCI) on Repeatable Battery for the Assessment of Neuropsychological Status (RBANS) in a dementia sample.
- Guarasi J, Trask C, Kirychuk S, Sanson C. A systematic review of occupational exposure to hydrogen sulfide in livestock operations.
- Hawranik P, Forbes D, Harrison W, Strain L, Morgan D, Woytkiw T, Blake C. The influence of rural context on the spread and uptake of evidence by home care case managers and allied health professionals.
- Holfeld L, Morgan D, O'Connell ME, Crossley M, Kirk A, Stewart N, Dal Bello-Haas V, McBain L, Cammer A, Minish D, Beever R, Kosteniuk J. Rural and Remote Memory Clinic – Updated (March 2004 – June 2014)
- Janzen B, Episkenew Jo-Ann, Abonyi S, Karunanayake C, Seesequasis J, Naytowhow A, Dosman JA, Pahwa P, and the First Nations Lung Health Project Research Team. Self-Reported Discrimination and Physical health among First Nations People in Canada
- Janzen B, Karunanayake C, Hagel L, Pahwa P, Dosman JA, and The Saskatchewan Rural Health Study Team. Multiple Socioeconomic Circumstances and Health in a Rural Canadian Population.
- Janzen B, Rennie D, Lawson J, Karunanayake C, Hagel L, Pahwa P, Dosman JA, and The Saskatchewan Rural Health Study Team. Adult Asthma and Socioeconomic Position in a Rural Canadian Population.
- Janzen B, Rennie D, Lawson J, Karunanayake C, Hagel L, Pahwa P, Dosman J and the Saskatchewan Rural Health Study Team. Socioeconomic Position and Adult Asthma in Rural Dwelling Canadians
- Karunanayake CP, Hagel L, Rennie DC, Lawson JA, Dosman JA, Pahwa P, and for the Saskatchewan Rural Health Study. Prevalence of respiratory symptoms and their relationship to environmental factors in rural population.
- Katapally T, Episkenew Jo-Ann, Karunanayake C, Abonyi S, Dosman J, Pahwa P, First Nations Lung Health Research Team. Working towards a community-based participatory intervention in First Nations: generating evidence to break the chain of association between lack of physical activity, overweight or obese weight status and risk of obstructive sleep apnea.
- Katapally T, Episkenew Jo-Ann, Marchildon G, Karunanayake C, Abonyi S, Dosman J, Pahwa P. Integrated Knowledge Translation to De-adopt Ineffective Policies and Practices: A Model to Address and Redress the Obesity-Obstructive Sleep Apnea Nexus in First Nations.
- Katselis G, Dawicki W, Ovsenek N, Belak Z, Gordon J, Kirychuk S. Chemical and biological evaluation of agricultural dusts.
- Khan MI, Trask C, Adebayo O, Boden C, Bath B. Who gets studied? Examining inequities in the low back disorder literature.
- Kirychuk S, Dwernychuk L, Owusu-Kyem A, Koehncke N, Karunanayake C, Punam P, Rennie D. Risk of Hearing Loss in Swine and Grain Workers.
- Kirychuk S, Rennie D, Karunanayake C, Lawson J, Russell E, Seesequasis J, Gamble E, Bird D, Naytowhow A, Pahwa P, Abonyi S, Episkenew J-A, Dosman J. Housing Factors and Relationships to Lung Health in two Saskatchewan First Nations Communities: Addressing through Community Engagement.
- Kosteniuk J, Wilson E, Penz K, MacLeod M, Stewart N, Kulig J, Karunanayake C, Kilpatrick K. Development and psychometric evaluation of the Primary Health Care Engagement (PHCE) Scale: a pilot study.
- Kosteniuk J, Morgan D, Quail J, O'Connell M, Kirk A, Stewart N, Crossley M, Teare G. Analysis of dementia prevalence, incidence, and care gaps in Saskatchewan: A mixed methods study.
- Kosteniuk J, Wilson E, Penz K, Stewart N, MacLeod M, Kulig J, Karunanayake C, Kilpatrick K. Development and psychometric evaluation of the Primary Health Care Engagement (PHCE) Scale: a pilot study.
- Kulyk K, Stewart N, Peacock S, Morgan D, O'Connell ME, Kosteniuk J. Evaluating the construction and validity of a questionnaire assessing healthcare provider perceptions of rural dementia care pathways.
- Lawson J, Rennie D, Hagel L, Marlenga B, Afanasieva A, Oluwole O, Dosman J, Pickett W. A comparison of data retrieval methods used in studies of rural children
- Liu A, Trask C, Pahwa P. Prediction Modeling the Influence of Workplace Characteristics on Hand-Arm Vibration Exposure Using Occupational Health and Safety Administrative Data. Winner of the Best Student Poster in Occupational Health, Awarded by the Canadian Association for Research in Work and Health.
- McMillan M, Pickett W, Trask C. for the Saskatchewan Farm Injury Cohort Study Team. Prevalence of musculoskeletal disorders among Saskatchewan farmers.
- Milosavljevic S, Mani R, Trask C. Does Farm Vehicle Vibration Alter Postural Control? Morgan, D., Jacklin, K., Bourassa, C., & Kosteniuk, J. Dementia Care in Rural and Indigenous Populations: The Canadian Consortium on Neurodegeneration in Aging.
- Morgan D, Kosteniuk J, O'Connell M, Dal Bello-Haas V, Stewart N, Kessler P. Work activities and perceived competencies related to dementia among rural home care providers.
- O'Connell M, Morgan D, Kosteniuk J, Stewart N, Crossley M, Kirk A. Remotely delivered cognitive testing to support rural primary care providers in dementia diagnoses. Olaniyi A, Kirychuk S, Ward H. HIV and TB.
- Oluwole O, Rennie D, Senthilselvan S, Dyck R, Lawson J. Agricultural Exposure and Asthma Severity and Phenotypes among Children in Saskatchewan
- Opikokew C, Katapally T, Episkenew Jo-Ann, Karunanayake C, Abonyi S, Dosman J, Pahwa P. Utilizing Indigenous Knowledge to Intervene and Inform Respiratory Health Policy and Practice in First Nations Communities.
- Owusu-Kyem A, Kirychuk A, Rennie D, Gordon J, Cockcroft D, Katselis G, Asselin J, Lawson J. Respiratory Outcomes and Relationships to Airborne Contaminants in Two Saskatchewan Communities
- Owusu-Kyem A, Lawson J, Kirychuk S, Rennie D, Asselin J, Cockcroft D, Gordon J. ARG.

FACULTY, STUDENTS & STAFF NEWS & AWARDS

Pahwa P, Karunanayake C, Lawson J, Rennie D, McMullin K, Seesequasis J, Naytowhow A, Hagel L, Abonyi S, Episknew Jo-Ann, Dosman JA and the First Nations Lung Health Project Research Team. Chronic Bronchitis in First Nations People- Prevalence and Associated Risk Factors.

Penz K, Kosteniuk J, MacLeod M, Kulig J, Karunanayake C, Kilpatrick K. Development and psychometric evaluation of the Job Demands in Nursing (JDIN) Scale and Job Resources in Nursing (JRIN) Scale.

Pickett W, King N, Lawson J, Dosman J, Trask C, Brison R, Hagel L, Janssen I. for the Saskatchewan Farm Injury Cohort Study Team. Mechanization of farm work practices and obesity: a study of Saskatchewan farm people.
Predicala B, Kirychuk S, Crowe T, Bartlett K, Katselis G, Whittington L. Reducing Pathogen Distribution from Animal Transportation. Presented:

Rai M, Gjevre JA, Karunanayake C, Dosman JA, Pahwa P. Comparison of risk factors for daytime sleepiness measured by Epworth Sleepiness score obtained via population surveys and during the sleep lab visit.

Rai M, Karunanayake C, Gjevre JA, Dosman JA, Pahwa P. Risk factors associated with physician diagnosed Obstructive Sleep Apnea.

Rai M, Lawson JA, Kanthan R, Karunanayake C, Hagel L, Rennie D, Dosman JA, Pahwa P, and the Saskatchewan Rural Cohort Study Group. Factors contributing to the prevalence of prostate cancer in rural Saskatchewan: the Saskatchewan Rural Health Study.

Rai M, Lawson JA, Kanthan R, Karunanayake C, Hagel L, Rennie D, Dosman JA, Pahwa P and the Saskatchewan Rural Cohort Study Group. First Nation Seniors: Social Determinants of Health and Health Outcomes. Factors contributing to the prevalence of prostate cancer in rural Saskatchewan: the Saskatchewan Rural Health Study

Ramsden VR, McMullin K, Seesequasis J, Naytowhow A, Karunanayake C, Abonyi S, Episknew Jo-Ann, Dosman J, Pahwa P. The Green Light Program: A Community Chosen Health Intervention.

Rennie D, Lawson J, Karunanayake C, Chen Y, Dosman J, Pahwa P, and the Saskatchewan Rural Health Study Team. Early Farm Exposure, Adult Atopy and Gender: The Saskatchewan Rural Cohort Study

Shelley K, Donna R, Chandima K, Joshua L, Russell E, Seesequasis J, Gamble E, Bird D, Naytowhow A, Pahwa P, Abonyi S, Episknew Jo-Ann, Dosman J. Housing Factors and Relationships to Lung Health in two Saskatchewan First Nations Communities: Addressing through Community Engagement.

Soltanifar M, Fenton M, Karunanayake C, Seesequasis J, Naytowhow A, Abonyi S, Episknew Jo-Ann, Dosman JA, Pahwa P and the First Nations Lung Health Project Research Team. Are Abdominal Girth and Weight predictive of lung function in Saskatchewan First Nations Men and Women?

Taylor-Gjevre RM, Trask C, King N, Koehncke N. for the Saskatchewan Farm Injury Cohort Study Team. (201) Prevalence and Occupational Impact of Arthritis in Saskatchewan Farmers.

Zejda JE, Farnik M, Smólka I, Lawson J, Brożek GM. Socio-demographic factors related to underdiagnosis of childhood asthma in Upper Silesia, Poland

Zhao G, Janzen B, Karunanayake C, Hagel L, Pahwa P, Dosman JA, and The Saskatchewan Rural Health Study Team. Socioeconomic Position, Gender and Hypertension in a Rural Canadian Population.

Zheng L, Goodridge D, Neudorf C, Lawson J. Urban-rural differences in hospital care utilization trends among patients with COPD and lung cancer in the 6 months prior to death.

Allison Cammer, MSc, RD:

- Received the Dietitians of Canada graduate student award presented at the Dietitians of Canada national conference in Ottawa, ON, on June 14, 2014
- Recognized by the College of Pharmacy and Nutrition with an Alumni of Influence Award at the College's Centennial Celebration in June, 2014.
- Recipient of the *Hope Hunt* graduate student award in September 2014.



Catherine Trask, PhD:

The 2014 winner of the Saskatchewan Health Research Foundation Top Establishment Grant, Socio-Health, for the subject "Walking away from chronic low back pain: one step at a time" (Co-Investigator).

THE NETWORK ELECTRONIC EDUCATION

Social media is a great way for people to connect and be heard, as well as a way to learn.

The Network encourages links to educational safety resources that are relative to a variety of farming operations.

The Network is active on Facebook and Twitter.
Follow the Network @ SaskAgSafety.



Annual Report compiled & designed by Sueli B. de Freitas
Edited by: Maura Gillis-Cipywnyk